

ANNUAL HEALTH STATISTICS

2011

SRI LANKA



MEDICAL STATISTICS UNIT

**MINISTRY OF HEALTH, NUTRITION AND
INDIGENOUS MEDICINE
SRI LANKA**

ISBN 978-955-577-876-3

Medical Statistics Unit

Ministry of Health, Nutrition and Indigenous Medicine

385, Rev. Baddegama Wimalawansa Thero Mawatha, Colombo 10

Telephone/Fax	:	+94 11 2695734
E-mail	:	medicalstatisticsunit@gmail.com
Web	:	www.health.gov.lk

Published in 2016

Preface

The Annual Health Bulletin is the main official publication for health data dissemination which provides national as well as sub national level health information of the country annually. As there was a delay on publishing the Annual Health Bulletins of 2009, 2010 and 2011, it was decided to publish statistics pertaining to those years.

This publication, Annual Health Statistics – 2011 provides information on Morbidity, Mortality, Resource availability and Provision of services of government health sector during the year 2011. This is a valuable source of information for the managers of the health care delivery programs, researchers, students, planners, policy makers; those who interested in past trends of the information.

I wish to place my sincere appreciation to all officials who have given their support by providing data pertaining to their institutions to make this publication successful.

After all, I wish to extend my grateful appreciation for the staff of the Medical Statistics Unit for their dedication and hard working in preparation of this publication by clearing backlog of data without affecting current data flow.

Anura Jayawickrama

Secretary

Ministry of Health, Nutrition and Indigenous Medicine

CONTENTS

Preface	i
Contents	iii
List of Detailed Tables	v
List of Figures	vi
Key Health Related Indicators	vii - viii
Data Tables 2011	1 - 41

LIST OF DETAILED TABLES

Tables		Page
	Detailed Tables	
1	Administrative Divisions and Local Government Bodies, 2011	3
2	Population, Land Area and Density by Province and District	4
3	Population by Five Year Age Groups and Sex, 2001 and 2011	5
4a	Vital Statistics, 1960 - 2011	6
4b	Vital Statistics by District, 2010 & 2011	7
4c	Registered Births and Hospital Births, 1975 - 2011	8
4d	Live Births, Maternal Deaths, Still Births and Low Birth Weight Babies in Government Hospitals by RDHS Division, 2011	9
4e	Maternal Services by Type of Institution, 2011	9
5	Percentage Distribution of Housing Units by Source of Drinking Water, 2009	10
6	Percentage Distribution of Housing Units by Type of Toilet, 2009	11
7a	Distribution of Government Medical Institutions and Beds by RDHS Division, December 2011	12
7b	Number of Health Institutions and Hospital Beds, 2004 - 2011	13
7c	Availability of Patient Beds by Type of Institution, 2011	13
8	Beds by Speciality and RDHS Division, December 2011	14
9	Key Health Personnel, 1990 - 2011	15
10	Distribution of Health Personnel by Regional Director of Health Services Division, December 2011	16-18
11	Distribution of Specialists in Curative Care Services by Regional Director of Health Services Division, December 2011	19
12	National Expenditure, Health Expenditure and GNP, 2006 - 2011	20
13	Summary of Health Expenditure and Source of Fund, 2006- 2011	20
14	Summary of Health Expenditure by Programme, 2011	21
15	Indoor Morbidity and Mortality Statistics by Broad Disease Groups, 2011	22
16	Trends in Hospital Morbidity and Mortality by Broad Disease Groups, 2004 - 2011	23
17	Trends in Hospitalization and Hospital Deaths of Selected Diseases, 2004 - 2011	24
18	Leading Causes of Hospitalization, 2011	25
19	Leading Causes of Hospital Deaths, 2011	25
20	Leading Causes of Hospitalization, 2000 - 2011	26
21	Leading Causes of Hospital Deaths, 2004 - 2011	27
22	Leading Causes of Hospitalization by District, 2011	28
23	Leading Causes of Hospital Deaths by Regional Director of Health Services Division, 2011	29
24	Cases and Deaths of Poisoning and Case Fatality Rate by Regional Director of Health Services Division, 2011	30
25	Inpatients Treated for Mental Disorders by Regional Director of Health Services Division, 2011	31
26	Case Fatality Rate for Selected Diseases, 2007 - 2011	32
27	Inpatients Treated and Hospital Deaths by Type of Institution and RDHS Division, 2011	33
28a	Outpatient Attendance by District and Type of Institution, 2011	34
28b	Trends in Inpatient and Outpatient Attendance and Rates per 1,000 Population, 1985 - 2011	35
29	Outpatient Attendance by RDHS Division, 2011	36
30	Outpatient Department (OPD) Visits by Type of Hospital, 2011	36
31	Clinic Visits by Quarter and Regional Director of Health Services Division , 2011	37
32	Clinic Visits by Quarter and Type of Hospital, 2011	38
33	Utilization of Medical Institutions by RDHS Division , 2011	39
34	Average Duration of Stay (Days) in Selected Types of Hospitals per Quarter, 2004 - 2011	40
35	Performance of Dental Surgeons by District, 2011	41

LIST OF FIGURES

Figures		Page
1	Crude Birth Rate and Crude Death Rate, 1945 - 2011	6
2	Registered Births Vs Hospital Births, 1975 - 2011	8
3	Number of Beds and Patient Beds per 1,000 Population, 1995 - 2011	13
4	Inpatient and Outpatient Attendance in Government Medical Institutions, 1972 - 2011	35

Key Health Related Indicators - 2011

Indicator	Year	Data	Source		
Demographic Indicators					
Total population (in thousands)	2011	20,892	Registrar General's Department		
Land area (sq. km)	1988	62,705	Survey General's Department		
Population density (persons per sq. km)	2011	333	Registrar General's Department		
Crude birth rate (per 1,000 population)	2011	17.6	Registrar General's Department		
Crude death rate (per 1,000 population)	2011	6.3			
Urban population (%)	2001	16.3	Population Census, 2001		
Child population (under 5 years) %	2006/07	9.0	Demographic and Health Survey ¹ , 2006/07		
Women in the reproductive age group (15-49 years) %	2006/07	51.4			
Average household size (Number of persons per family)	2009/10	4.0	Income and Expenditure Survey, 2009/10		
Socio-economic Indicators					
GNP per capita at current prices (Rs.)	2011	310,090	Department of Census & Statistics		
Human development index	2011	0.74	UNDP, Human Development Report		
Unemployment rate	Total	4.2	Department of Census & Statistics		
		Female		7.0	
		Male		2.7	
Dependency ratio	Total	50.8	Demographic and Health Survey ¹ , 2006/07		
		Old-age (60 years and more)		10.9	
		Young (under 15 years)		28.4	
Adult Literacy rate (%)	Total	90.7	Population Census, 2001		
		Female		89.2	
		Male		92.2	
Pupil teacher ratio in	Government Schools	18	Ministry of Education		
		Private Schools		21	
		Pirivenas		10	
Singulate mean age at marriage (years)	Female	2006/07	23.5	Demographic and Health Survey ¹ , 2006/07	
Health and Nutrition Indicators					
Life expectancy at birth (years)	Female	2011 ²	79.8	Department of Census and Statistics (Life Tables for Sri Lanka and Districts, 2000-2002)	
	Male		70.5		
Neonatal mortality rate (per 1,000 live births)	2011*	6.4	Registrar General's Department		
Infant mortality rate (per 1,000 live births)	2011*	9.1			
Under-five mortality rate (per 1,000 live births)	2011*	10.9			
Maternal mortality rate (per 100,000 live births)	2010	22.0			
Low-birth-weight per 100 live births in government hospitals %	2011	16.7	Medical Statistics Unit		
Percentage of children (below-2SD)	Under weight (weight-for-age)	2006/07	21.1	Demographic and Health Survey ¹ , 2006/07	
			Wasting (Acute undernutrition or weight-for-height)		14.7
			Stunting (Chronic malnutrition or height-for-age)		17.3

* Provisional

Note : ¹ Demographic and Health Survey 2006/07 - Exclude Northern Province

² Projected life expectancy at birth

Indicator	Year	Data	Source
Primary Health Care Coverage Indicators			
Percentage of pregnant women attended by skilled personnel	2006/07	98.6	Demographic and Health Survey, 2006/07
Percentage of live births occurred in government hospitals	2011	93.1	Medical Statistics Unit
Women of childbearing age using contraceptives (%)	2006/07	Modern method	Demographic and Health Survey, 2006/07
		Traditional method	
Population with access to safe water (%)	2006/07	89.1	
Health Resources			
Government health expenditure as a percent of GNP	2011	1.26	Department of Health Services
Government health expenditure as a percent of total government expenditure	2011	4.2	
Per capita health expenditure (Rs.)	2011	3,938	
Medical Officers per 100,000 population	2011	73.2	Medical Statistics Unit
Population per Medical Officer	2011	1,366	
Dental Surgeons per 100,000 population	2011	5.5	
Nurses per 100,000 population	2011	171.9	
Public Health Midwives per 100,000 population	2011	26.3	
Number of hospitals	2011	638	
Number of hospital beds	2011	73,939	
Hospital beds per 1,000 population	2011	3.5	
Number of Medical Officer of Health (MOH) Divisions	2011	327	

Data Tables

2011

ANNUAL HEALTH STATISTICS - 2011

Table 1. Administrative Divisions and Local Government Bodies, 2011

Administrative Area (Province/District)	Divisional Secretary Divisions	Grama Niladari Divisions	Local Government Bodies		
			MC	UC	Pradeshuya Saba
Western Province					
Colombo	13	557	5	5	3
Gampaha	13	1,177	2	5	12
Kalutara	14	762	-	4	12
Central Province					
Kandy	20	1,187	1	4	17
Matale	11	545	2	-	11
Nuwara Eliya	5	491	1	2	5
Southern Province					
Galle	19	895	1	2	17
Matara	16	650	1	1	15
Hambantota	12	576	1	2	10
Northern Province					
Jaffna	15	435	1	3	13
Kilinochchi	4	95	-	-	3
Mannar	5	153	-	1	4
Vavuniya	4	102	-	1	4
Mullaitivu	6	136	-	-	4
Eastern Province					
Batticaloa	14	346	1	1	9
Ampara	20	503	2	1	17
Trincomalee	11	230	-	2	11
North-Western Province					
Kurunegala	30	1,610	1	1	19
Puttalam	16	548	-	2	10
North Central Province					
Anuradhapura	22	694	1	-	18
Polonnaruwa	7	295	-	-	7
Uva Province					
Badulla	15	567	2	1	15
Monaragala	11	319	-	-	10
Sabaragamuwa Province					
Ratnapura	17	575	1	2	14
Kegalle	11	573	-	1	11
Sri Lanka	331	14,021	23	41	271

Source : Department of Census and Statistics

ANNUAL HEALTH STATISTICS - 2011

Table 2. Population, Land Area and Density by Province and District

Administrative Area (Province/District)	Land Area (sq. km) as at 1988 ¹	Percentage Land Area	2010	2011		
			Estimated Mid-year Population ² ('000)	Estimated Mid-year Population ² ('000)	Percentage Distribution of Population	Population Density (Persons per sq. km)
Sri Lanka	62,705	100.0	20,675	20,892	100.0	333
Western Province	3,593	5.7	5,891	5,946	28.8	1,655
Colombo	676	1.1	2,573	2,606	12.6	3,855
Gampaha	1,341	2.1	2,176	2,189	10.6	1,632
Kalutara	1,576	2.5	1,142	1,151	5.6	730
Central Province	5,575	8.9	2,696	2,727	13.2	489
Kandy	1,917	3.1	1,437	1,455	7.0	759
Matale	1,952	3.1	496	503	2.4	258
Nuwara Eliya	1,706	2.7	763	769	3.7	451
Southern Province	5,383	8.6	2,495	2,518	12.2	468
Galle	1,617	2.6	1,084	1,094	5.3	677
Matara	1,270	2.0	839	847	4.1	667
Hambantota	2,496	4.0	572	577	2.8	231
Northern Province	8,290	13.2	1,149	1,160	5.6	140
Jaffna	929	1.5	536	542	2.6	583
Kilinochchi	1,205	1.9	150	154	0.7	128
Mannar	1,880	3.0	162	163	0.8	87
Vavuniya	1,861	3.0	172	176	0.9	95
Mullaitivu	2,415	3.9	129	125	0.6	52
Eastern Province	9,361	14.9	1,561	1,584	7.7	169
Batticaloa	2,610	4.2	543	549	2.7	210
Ampara	4,222	6.7	644	654	3.2	155
Trincomalee	2,529	4.0	374	381	1.8	151
North-Western Province	7,506	12.0	2,353	2,377	11.5	317
Kurunegala	4,624	7.4	1,569	1,583	7.7	342
Puttalam	2,882	4.6	784	794	3.8	276
North Central Province	9,741	15.5	1,238	1,254	6.1	129
Anuradhapura	6,664	10.6	829	839	4.1	126
Polonnaruwa	3,077	4.9	409	415	2.0	135
Uva Province	8,335	13.3	1,333	1,349	6.5	162
Badulla	2,827	4.5	891	902	4.4	319
Monaragala	5,508	8.8	442	447	2.2	81
Sabaragamuwa Province	4,921	7.8	1,959	1,977	9.6	402
Ratnapura	3,236	5.2	1,136	1,149	5.6	355
Kegalle	1,685	2.7	823	828	4.0	491

Source : ¹ Survey General's Department
² Registrar General's Department

Table 3. Population by Five Year Age Groups and Sex, 2001 and 2011

Age Group	Year 2001 ¹						Year 2011 ²					
	Total		Male		Female		Total		Male		Female	
	Number	%	Number	%	Number	%	Number ('000)	%	Number ('000)	%	Number ('000)	%
All ages	16,929,689	100.0	8,425,607	100.0	8,504,082	100.0	20,892	100.0	10,381	100.0	10,511	100.0
0 - 4	1,439,761	8.5	733,775	8.7	705,986	8.3	1,777	8.5	904	8.7	873	8.3
5 - 9	1,483,591	8.8	754,518	9.0	729,073	8.6	1,831	8.8	930	9.0	901	8.6
10 - 14	1,525,674	9.0	777,519	9.2	748,155	8.8	1,883	9.0	958	9.2	925	8.8
15 - 19	1,646,827	9.7	834,695	9.9	812,132	9.5	2,032	9.7	1,028	9.9	1,004	9.6
20 - 24	1,591,126	9.4	798,288	9.5	792,838	9.3	1,964	9.4	984	9.5	980	9.3
25 - 29	1,340,562	7.9	660,586	7.8	679,976	8.0	1,654	7.9	814	7.8	840	8.0
30 - 34	1,290,121	7.6	636,734	7.6	653,387	7.7	1,593	7.6	785	7.6	808	7.7
35 - 39	1,258,112	7.4	622,957	7.4	635,155	7.5	1,553	7.4	768	7.4	785	7.5
40 - 44	1,170,941	6.9	583,894	6.9	587,047	6.9	1,445	6.9	719	6.9	726	6.9
45 - 49	1,030,560	6.1	509,247	6.0	521,313	6.1	1,271	6.1	627	6.0	644	6.1
50 - 54	917,139	5.4	452,311	5.4	464,828	5.5	1,131	5.4	557	5.4	574	5.5
55 - 59	671,403	4.0	324,223	3.8	347,180	4.1	828	4.0	399	3.8	429	4.1
60 & above	1,563,872	9.2	736,860	8.7	827,012	9.7	1,930	9.2	908	8.7	1,022	9.7

Note : Population in year 2001 excludes the districts Jaffna, Mannar, Vavuniya, Mullaitivu, Kilinochchi, Batticaloa & Trincomalee.

Source : ¹ Census of Population & Housing, 2001

² Registrar General's Department

ANNUAL HEALTH STATISTICS - 2011

Table 4a. Vital Statistics, 1960 - 2011

Year	Estimated Mid-year Population ('000)	Crude Birth Rate	Crude Death Rate	Maternal Mortality Ratio Per 100,000 Live Births	Infant Mortality Rate	Neo-natal Mortality Rate	Under Five Mortality Rate
		Per 1,000	Population		Per 1,000 Live Births		
1960	9,896	36.6	8.6	302	57.0	34.2	NA
1965	11,164	33.1	8.2	239	53.2	33.3	NA
1970	12,516	29.4	7.5	145	47.5	29.7	NA
1975	13,496	27.8	8.5	102	45.1	27.0	NA
1980	14,747	28.4	6.2	64	34.4	22.7	NA
1985	15,842	24.6	6.2	51	24.2	16.2	NA
1990	17,015	19.9	5.7	NA	19.3	NA	NA
1991	17,267	20.7	5.5	42	17.7	12.8	22.2
1992	17,426	20.5	5.6	27	17.9	13.0	22.5
1993	17,646	19.9	5.5	25	16.3	12.0	20.2
1994	17,891	19.9	5.6	21	16.9	12.9	20.5
1995	18,136	18.9	5.8	24	16.5	12.5	20.0
1996	18,336	18.6	6.7	23	17.3	13.0	20.9
1997	18,568	17.9	6.2	35	16.3	12.8	21.8
1998	18,787	17.2	6.0	27	14.3	10.5	17.9
1999	19,056	17.3	6.1	19	13.8	10.6	16.8
2000	19,102	18.2	6.1	20	13.3	9.9	16.3
2001	18,797	19.1	6.0	18	12.2	9.6	15.2
2002	18,921	19.4	5.9	16	11.4	8.4	13.7
2003	19,153	19.3	6.0	19	11.3	8.7	13.5
2004	19,435	18.8	5.9	12	9.8	7.2	12.6
2005	19,644	18.9	6.7	12	11.2	7.2	19.0
2006	19,858	18.8	5.9	14	10.0	7.4	12.0
2007	20,039	19.3	5.9	NA	8.5	5.9	10.4
2008	20,246	18.5	6.1	NA	9.0 ¹	6.2 ¹	11.1 ¹
2009	20,476	18.0	6.2	22	9.7	6.4	12.1
2010	20,675	17.6	6.3	22	9.9	7.0	12.2
2011	20,892	17.4*	5.9*	NA	9.1*	6.4*	10.9*

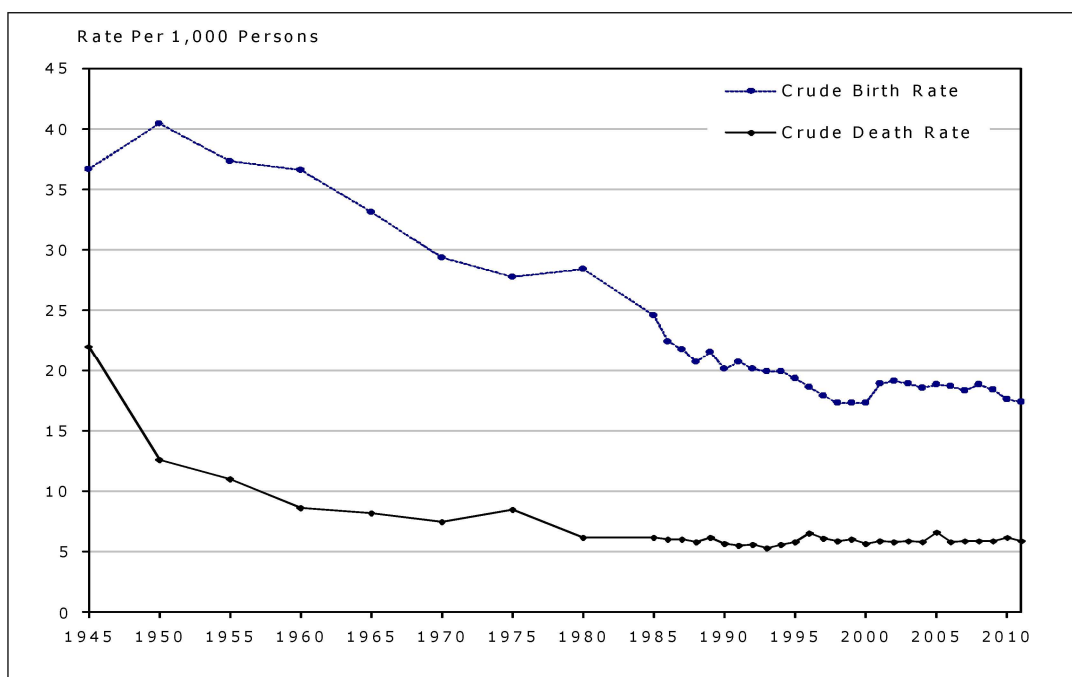
* Provisional

Source : Registrar General's Department

NA - Not Available

¹ Data for Mullaitivu and Killinochchi districts are not available

Figure 1. Crude Birth Rate and Crude Death Rate, 1945 - 2011



ANNUAL HEALTH STATISTICS - 2011

Table 4b. Vital Statistics by District, 2010 & 2011

District	Crude Birth Rate		Crude Death Rate		Maternal Mortality Rate, 2010 (Per 100,000 Live Births)	Infant Mortality Rate, 2010	Neo-Natal Mortality Rate, 2010
	2010	2011*	2010	2011*			
	Per 1,000 Population						
Colombo	21.6	21.2	8.3	8.2	7.2	15.6	9.1
Gampaha	12.4	12.5	5.4	5.2	18.6	3.9	2.9
Kalutara	14.2	14.8	6.1	6.0	24.7	5.6	4.3
Kandy	20.5	20.3	7.6	7.3	20.4	16.6	12.6
Matale	20.2	20.8	5.5	5.4	20.0	7.6	5.9
Nuwara Eliya	12.8	13.5	5.0	4.6	20.4	12.1	6.8
Galle	17.4	19.0	7.0	7.1	31.9	8.6	6.5
Matara	16.7	14.5	5.6	5.8	0.0	10.3	7.9
Hambantota	15.3	15.8	4.7	4.7	11.4	5.4	3.5
Jaffna	18.6	16.1	7.2	6.3	80.2	13.0	10.0
Kilinochchi	25.4	20.7	3.6	2.1	26.2	0.3	0.0
Mannar	10.2	14.1	2.0	3.3	0.0	0.0	0.0
Vavuniya	36.9	23.7	6.5	5.0	31.5	8.2	6.0
Mullaitivu	9.8	7.5	62.4	13.8	0.0	26.0	2.4
Batticaloa	18.8	17.7	4.3	5.1	48.9	19.2	15.9
Ampara	21.8	22.0	4.3	4.3	21.3	4.3	2.5
Trincomalee	21.7	23.8	3.7	3.7	49.3	3.0	1.5
Kurunegala	16.7	16.1	6.5	6.2	34.3	9.6	8.0
Puttalam	17.9	18.3	4.7	4.7	7.1	6.7	5.2
Anuradhapura	19.3	18.9	5.6	5.7	43.7	16.7	13.9
Polonnaruwa	18.3	18.1	4.6	4.4	0.0	2.7	2.3
Badulla	19.7	18.4	5.4	5.4	28.5	8.3	5.5
Monaragala	15.5	16.0	3.8	3.8	14.6	2.8	1.3
Ratnapura	17.6	18.7	5.2	5.1	5.0	7.2	4.9
Kegalle	13.2	12.6	5.7	5.7	27.5	6.1	4.0
Sri Lanka	17.6	17.4	6.3	5.9	22.0	9.9	7.0

*Provisional

Source : Registrar Generals' Department

Note: District level figures are based on place of occurrence data

ANNUAL HEALTH STATISTICS - 2011

Table 4c. Registered Births and Hospital Births, 1975 - 2011

Year	Registered Live Births ¹	Live Births in Government Hospitals ²	Percentage of Live Births in Government Hospitals
1975	375,857	251,039	66.8
1980	418,373	316,394	75.6
1985	389,599	292,970	75.2
1990 ^a	294,120	241,390	82.1
1991 ^a	304,347	262,388	86.2
1992	356,842	296,484	83.1
1993	350,707	298,567	85.1
1994	356,071	300,180	84.3
1995	343,224	297,949	86.8
1996 ^b	330,963	287,514	86.9
1997 ^b	325,017	284,955	87.7
1998	322,672	287,514	89.1
1999	328,725	300,866	91.5
2000	347,749	314,352	90.4
2001	358,583	325,813	90.9
2002	367,709	307,272	83.6
2003	370,643	316,465	85.4
2004	364,711	336,642	92.3
2005	370,731	341,539	92.1
2006	373,538	353,361	94.6
2007	386,573	356,852	92.3
2008	373,575	352,523	94.4
2009	368,304	339,437	92.2
2010	363,881	334,137	91.8
2011*	363,415	338,463	93.1

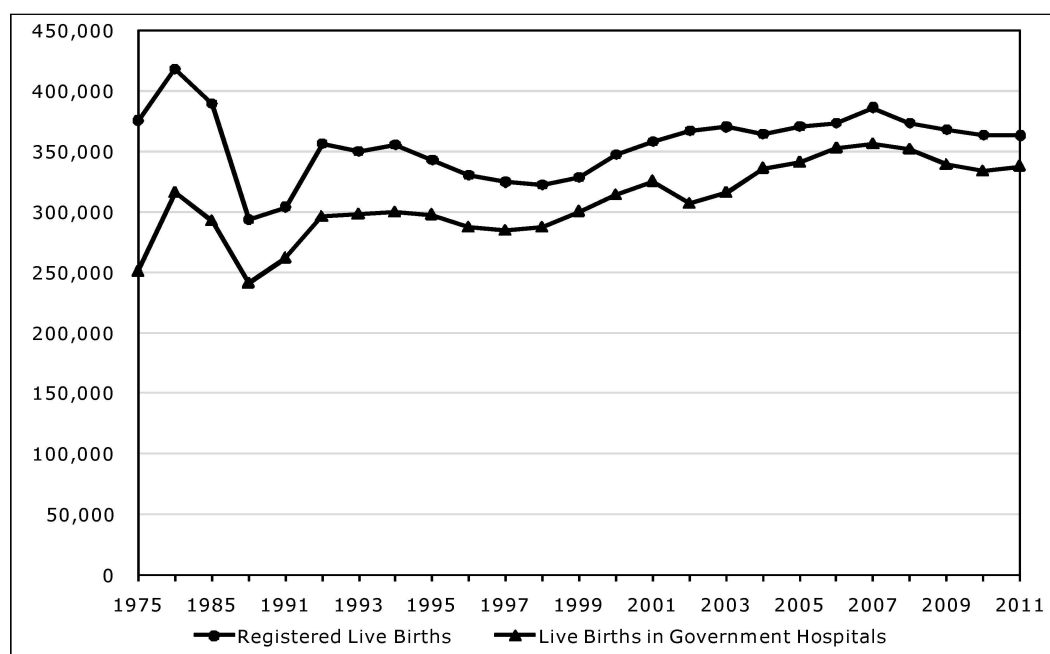
*Provisional

Source: 1. Registrar General's Department
2. Medical Statistics Unit

^a Excludes Northern and Eastern Provinces

^b Excludes Kilinochchi and Mullaitivu Districts

Figure 2. Registered Births Vs Hospital Births, 1975 - 2011



ANNUAL HEALTH STATISTICS - 2011

Table 4d. Live Births, Maternal Deaths, Still Births and Low Birth Weight Babies in Government Hospitals by RDHS Division, 2011

RDHS Division	Total Births	Total Live Births	Maternal Deaths		Still Births		Low Weight Births ⁴	
			No.	Rate ¹	No.	Rate ²	No.	Rate ³
Colombo	44,726	44,384	13	29.3	342	7.6	7,365	16.6
Gampaha	25,136	24,959	1	4.0	177	7.0	3,821	15.3
Kalutara	16,534	16,444	2	12.2	90	5.4	2,668	16.2
Kandy	28,079	27,797	14	50.4	282	10.0	5,162	18.6
Matale	10,518	10,440	-	-	78	7.4	1,745	16.7
Nuwara Eliya	10,701	10,595	1	9.4	106	9.9	3,043	28.7
Galle	18,995	18,890	5	26.5	105	5.5	2,620	13.9
Matara	12,999	12,894	3	23.3	105	8.1	2,119	16.4
Hambantota	9,694	9,633	3	31.1	61	6.3	1,060	11.0
Jaffna	9,008	8,899	1	11.2	109	12.1	1,227	13.8
Kilinochchi	2,406	2,391	-	-	15	6.2	292	12.2
Vavuniya	3,954	3,921	1	25.5	33	8.3	472	12.0
Mannar	1,496	1,493	-	-	3	2.0	217	14.5
Batticaloa	9,163	9,134	1	10.9	29	3.2	1,496	16.4
Ampara	5,470	5,435	-	-	35	6.4	896	16.5
Kalmunai	8,475	8,447	2	23.7	28	3.3	1,162	13.8
Trincomalee	8,077	8,027	-	-	50	6.2	1,286	16.0
Kurunegala	25,675	25,493	4	15.7	182	7.1	3,978	15.6
Puttalam	14,662	14,556	-	-	106	7.2	1,713	11.8
Anuradhapura	16,144	16,010	3	18.7	134	8.3	2,680	16.7
Polonnaruwa	7,982	7,940	-	-	42	5.3	1,520	19.1
Badulla	12,683	12,606	-	-	77	6.1	2,728	21.6
Monaragala	7,584	7,525	-	-	59	7.8	1,522	20.2
Ratnapura	20,068	19,917	2	10.0	151	7.5	3,728	18.7
Kegalle	10,697	10,633	-	-	64	6.0	2,078	19.5
Sri Lanka	340,926	338,463	56	16.5	2,463	7.2	56,598	16.7

¹ Per 100,000 live births

Source : Medical Statistics Unit

² Per 1,000 total births

³ Per 100 live births

⁴ Birth weight less than 2500 grams

Table 4e. Maternal Services by Type of Institution, 2011

Type of Institution	Outcome of Delivery			Total Deliveries		Method of Delivery		
	Single	Twin	Other	Number	%	Normal	Forceps	Caesarean
Teaching Hospitals	120,109	1,337	36	121,482	36.0	79,532	1,608	40,342
Provincial General Hospitals	13,265	174	7	13,446	4.0	9,061	47	4,338
District General Hospitals	81,365	814	9	82,188	24.3	57,392	443	24,353
Base or District Base Hospitals - Type A	66,419	479	5	66,903	19.8	47,070	251	19,582
Base or District Base Hospitals - Type B	34,372	193	3	34,568	10.2	26,435	349	7,784
Divisional Hospitals - Type A	3,680	10	-	3,690	1.1	3,685	5	-
Divisional Hospitals - Type B	10,282	20	-	10,302	3.1	10,279	16	7
Divisional Hospitals- Type C	5,057	14	-	5,071	1.5	5,070	1	-
Primary Medical Care Unit & Maternity Homes	5	-	-	5	-	5	-	-
Primary Medical Care Units	109	-	-	109	-	109	-	-
Sri Lanka	334,663	3,041	60	337,764	100.0	238,638	2,720	96,406

Source : Medical Statistics Unit

ANNUAL HEALTH STATISTICS - 2011

Table 5. Percentage Distribution of Housing Units by Source of Drinking Water, 2009

Province/District	Total	Protected Well Within Premises	Protected Well Outside Premises	Unprotected Well	Tube Well	Tap Within Premises	Tap Outside Premises	Stream Water Collected and Distributed by Pipe Line	River/Tank/Stream	Other
Sri Lanka	100.0	35.8	14.4	3.8	3.9	28.9	4.7	6.1	1.0	1.4
Western Province	100.0	41.3	8.0	2.2	3.9	39.2	3.4	1.2	0.2	0.8
Colombo	100.0	23.6	2.7	0.7	0.9	67.0	3.7	0.6	0.0	0.7
Gampaha	100.0	56.0	8.9	1.8	7.6	21.5	3.4	0.1	0.0	0.6
Kalutara	100.0	45.7	16.3	5.7	2.0	21.0	2.6	4.4	0.9	1.4
Central Province	100.0	20.8	11.6	3.3	2.0	37.1	9.5	12.3	1.4	2.0
Kandy	100.0	14.7	12.1	3.4	1.1	46.4	7.6	10.4	2.0	2.2
Matale	100.0	28.6	17.4	2.8	6.7	28.6	7.2	6.5	1.3	0.9
Nuwara Eliya	100.0	26.6	6.9	3.6	0.4	26.0	14.7	19.6	0.2	2.0
Southern Province	100.0	33.3	12.6	5.7	1.1	34.9	4.3	6.0	0.8	1.2
Galle	100.0	42.2	16.4	8.1	0.9	24.3	4.4	2.7	0.3	0.8
Matara	100.0	35.6	10.2	5.1	0.6	30.3	2.4	13.5	1.3	1.1
Hambantota	100.0	12.9	8.5	2.1	2.0	61.8	7.0	2.0	1.0	2.7
Northern Province¹	100.0	46.2	30.6	0.9	8.7	2.6	8.1	0.7	0.5	1.8
Jaffna	100.0	46.0	34.5	0.0	9.1	0.5	9.0	0.1	0.0	0.9
Vavunia	100.0	47.1	17.6	3.8	7.4	9.5	5.1	2.6	2.0	4.8
Eastern Province	100.0	51.4	16.7	2.1	4.7	18.3	4.9	0.0	0.9	1.0
Batticaloa	100.0	75.0	13.0	1.0	8.5	0.7	0.4	0.0	1.1	0.2
Ampara	100.0	40.8	18.9	3.5	3.6	23.5	8.3	0.0	1.0	0.5
Trincomalee	100.0	30.7	19.1	1.4	0.1	38.7	6.5	0.0	0.4	3.1
North Western Province	100.0	44.7	23.0	5.1	10.4	10.5	2.9	1.4	0.2	1.9
Kurunegala	100.0	52.4	26.8	7.1	2.4	7.4	1.1	2.0	0.3	0.4
Puttalam	100.0	29.2	15.3	1.1	26.4	16.6	6.3	0.1	0.0	4.9
North Central Province	100.0	32.9	26.6	5.5	3.2	25.2	3.9	0.5	0.3	2.0
Anuradhapura	100.0	30.0	30.7	5.3	3.2	23.6	3.6	0.7	0.3	2.6
Polonnaruwa	100.0	38.8	18.4	5.8	3.2	28.4	4.4	0.0	0.4	0.6
Uva Province	100.0	17.0	14.8	4.2	3.4	29.5	5.2	20.5	4.8	0.5
Badulla	100.0	14.7	10.9	3.9	0.6	29.4	3.4	30.5	6.1	0.4
Monaragala	100.0	21.1	21.8	4.8	8.6	29.7	8.4	2.3	2.4	0.8
Sabaragamuwa Province	100.0	31.5	12.7	6.3	0.8	21.5	3.8	18.8	1.9	2.7
Ratnapura	100.0	27.2	10.7	5.3	1.1	24.1	4.4	23.3	2.7	1.3
Kegalle	100.0	37.3	15.5	7.7	0.3	18.0	3.0	12.8	0.9	4.4

Source : Income & Expenditure Survey, 2009, Department of Census and Statistics

¹ Excluding Mannar, Killinochchi and Mullaitivu districts

ANNUAL HEALTH STATISTICS - 2011

Table 6. Percentage Distribution of Housing Units by Type of Toilet, 2009

Province/District	Type of Toilet Used					
	Total	Water Seal	Pour Flush	Pit	Other	No Toilet
	%	%	%	%	%	%
Sri Lanka	100.0	77.0	16.7	3.7	0.1	2.5
Western Province	100.0	89.4	9.6	0.6	0.1	0.4
Colombo	100.0	86.1	13.1	0.6	0.0	0.2
Gampaha	100.0	90.2	8.8	0.5	0.2	0.3
Kalutara	100.0	94.2	4.1	0.9	0.0	0.8
Central Province	100.0	69.2	22.1	5.9	0.3	2.5
Kandy	100.0	66.0	27.8	4.6	0.1	1.5
Matale	100.0	63.1	24.5	10.9	0.0	1.5
Nuwara Eliya	100.0	79.1	10.3	4.9	0.8	4.9
Southern Province	100.0	69.3	27.3	1.8	0.1	1.5
Galle	100.0	62.0	34.9	1.2	0.2	1.8
Matara	100.0	81.4	16.3	1.4	0.0	0.9
Hambantota	100.0	66.3	28.5	3.4	0.0	1.8
Northern Province¹	100.0	54.8	12.2	14.9	0.0	18.1
Jaffna	100.0	58.5	0.2	19.1	0.0	22.2
Vavunia	100.0	42.3	52.1	0.9	0.0	4.6
Eastern Province	100.0	66.5	18.4	6.1	0.0	8.9
Batticaloa	100.0	75.6	8.2	2.2	0.0	14.0
Ampara	100.0	64.7	22.1	9.0	0.0	4.3
Trincomalee	100.0	54.3	29.1	7.6	0.0	9.0
North Western Province	100.0	79.5	14.4	2.7	0.1	3.3
Kurunegala	100.0	78.8	16.1	3.2	0.1	1.8
Puttalam	100.0	81.0	10.9	1.5	0.2	6.3
North Central Province	100.0	69.9	22.3	6.4	0.1	1.2
Anuradhapura	100.0	73.8	19.0	5.6	0.0	1.6
Polonnaruwa	100.0	62.1	29.0	8.2	0.2	0.6
Uva Province	100.0	62.3	30.4	6.1	0.0	1.2
Badulla	100.0	64.2	28.8	5.7	0.0	1.3
Monaragala	100.0	58.8	33.5	6.8	0.0	0.9
Sabaragamuwa Province	100.0	87.3	7.6	4.3	0.0	0.9
Ratnapura	100.0	85.2	8.8	4.8	0.1	1.1
Kegalle	100.0	90.0	5.9	3.5	0.0	0.7

Source : Income & Expenditure Survey, 2009, Department of Census and Statistics

¹ Excluding Mannar, Kilinochchi and Mullaitivu districts

ANNUAL HEALTH STATISTICS - 2011

Table 7a. Distribution of Government Medical Institutions and Beds by RDHS Division, December 2011

District	Teaching Hospitals		Provincial General Hospitals		District General Hospitals		Base Hospitals Type A		Base Hospitals Type B		Divisional Hospitals Type A		Divisional Hospitals Type B		Divisional Hospitals Type C		Primary Medical Care Units and Maternity Homes		Other Hospitals		Total Hospitals		Beds per 1,000 Population ^a	Central Dispensaries	MOH Areas
	Ins.	Beds	Ins.	Beds	Ins.	Beds	Ins.	Beds	Ins.	Beds	Ins.	Beds	Ins.	Beds	Ins.	Beds	Ins.	Beds	Ins.	Beds	Ins.	Beds			
Colombo	7	8,071					2	944	1	285	1	97	6	431	2	57	5	NR	7	3,488	31	13,373	5.2	28	13
Gampaha	1	1,488			2	1,453	1	586	2	263	4	635	1	78	7	214			5	1,237	23	5,954	2.7	45	16
Kalutara			1	797			3	927		8	365		8	582	6	180					21	2,851	2.5	9	12
Kandy	3	3,485			1	476			2	443			15	998	32	1,017			7	119	60	6,538	4.5	28	23
Matale			1	738			1	293					4	254	14	350					20	1,635	3.2	15	12
Nuwara Eliya			1	438			1	108	1	151	3	320	7	522	13	351					26	1,890	2.5	22	13
Galle	2	1,910					2	716	1	113	1	1.0	8	605	10	244	2	17	2	11	28	3,726	3.4	24	19
Matara			1	1,072					3	387	1	125	6	471	5	226					16	2,281	2.7	20	17
Hambantota			1	439			1	232	2	333			8	579	9	286					21	1,869	3.2	14	12
Jaffna	1	1,316					2	380	2	267			4	311	18	343			1	20	28	2,637	4.3	16	14
Kilinochchi			1	185					1	40					7	94					9	319	2.0	6	5
Mulaitivu			1	NR			1	NR	1	NR	1	64	4	NR							8	64	0.4	6	4
Vavuniya			1	610					1	185					8	125					10	920	5.2	2	4
Mannar			1	350									4	201	6	117					11	668	6.4	5	5
Batticaloa	1	931							3	430			5	274	13	219					27	1,976	3.6	8	14
Ampara			1	535					2	262					7	233					10	1,030	4.6 ¹	18	7
Kalmunai							2	728	3	520			7	560	5	144	4	54			21	2,006		8	13
Trincomalee			1	389			1	252	2	246					12	411					16	1,298	3.4	13	11
Kurunegala	1	1,837					1	565	3	708	7	771	13	988	21	558	1	11			47	5,438	3.4	55	22
Puttalam			1	576			1	359	1	354	2	247	4	237	15	263					24	2,036	2.6	23	9
Anuradhapura	1	1,510							3	368	3	349	8	571	26	863			1	14	42	3,675	4.4	20	19
Polonnaruwa			1	585					2	230	1	133	4	245	4	156					12	1,349	3.3	15	7
Baculla							2	707	1	121	2	193	6	418	35	615					47	3,381	3.8	17	16
Monaragala			1	391					3	336	1	95	5	337	8	236					18	1,395	3.1	10	11
Ratnapura			1	1,103			1	390	3	561	3	352	7	431	23	579					38	3,416	3.0	12	18
Kegalle	1	783							3	718	5	477	1	63	12	143			2	30	24	2,214	2.7	20	11
Total	18	21,331	2	2,430	17	9,034	22	7,187	46	7,321	38	4,333	135	9,156	318	8,024	17	204	25	4,919	638	73,939	3.5	459	327

Source : Medical Statistics Unit

NR - Not Responded

^a Used provisional mid-year populational for calculation

¹ Includes Kalmunai data

Note: Teaching Hospitals such as Institute of Cancer, Mental and Dental Hospitals are categorized under "Other Hospitals"

ANNUAL HEALTH STATISTICS - 2011

Table 7b. Number of Health Institutions and Hospital Beds, 2004 - 2011

Item	2004	2005	2006	2007	2008	2009	2010	2011
Hospitals ¹	628	608	608	615	647	642	636	638
Patient Beds ¹	57,404	61,594	67,024	68,694	67,942	70,842	72,506	73,939
Patient Beds per 1,000 Population	2.9	3.2	3.4	3.4	3.4	3.5	3.5	3.5 ²
Central Dispensaries	397	413	428	441	439	443	464	459
MOH Areas	273	286	288	291	298	303	327	327

¹ Includes Primary medical Care Units & Maternity Homes

Source : Medical Statistics Unit

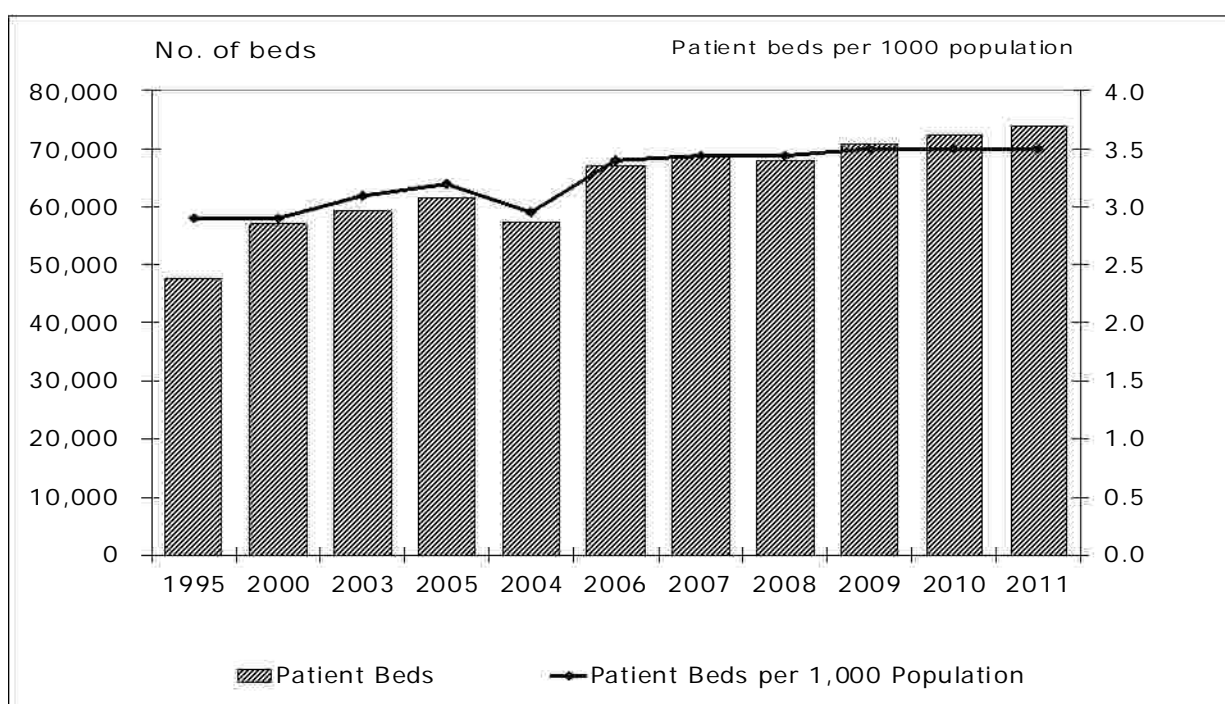
² Used provisional mid-year population for calculation

Table 7c. Availability of Patient Beds by Type of Institution, 2011

Type of Institutions	Total Number of Institutions 2011	Total Institutions According to Received Details of Beds	Patient Beds (Range)	Average Number of Patient Beds	Number of Hospitals Having Less than Average Number of Patient Beds
Teaching Hospitals	18	18	115 - 3580	1,185	11
Provincial General Hospitals	2	2	1103 - 1327	1,215	1
District General Hospitals	17	16	185 - 1072	564	8
Base Hospitals Type A	22	21	102 - 586	342	11
Base Hospitals Type B	46	45	40 - 368	166	27
Divisional Hospitals Type A	38	38	64 - 272	114	22
Divisional Hospitals Type B	135	130	32 - 113	71	71
Divisional Hospitals Type C	318	273	2 - 89	30	145
Primary Medical Care Units and Maternity Homes	17	12	8 - 56	17	9
Other Hospitals	25	19	9 - 1530	259	14

Source : Medical Statistics Unit

Figure 3. Number of Beds and Patient Beds per 1,000 Population, 1995 - 2011



ANNUAL HEALTH STATISTICS - 2011

Table 8. Beds by Speciality and RDHS Division, December 2011

RDHS Division	Mixed Medical & Surgical ¹	Medical	Surgical	Paediatrics / Children ²	Obstetric / Gynaecology	Communicable Diseases	Tuberculosis	Cancer	Leprosy	Psychiatry	Neurology / Neuro Surgery	Genito Urinary	Cardiology	E.N.T	Eye	Skin	Orthopaedic / Accident	Thoracic Surgery	Plastic Surgery / Burns Unit	Rheumatology / Rehabilitation	Dental	Others ³	Total
Colombo	1,308	2,042	1,710	1,547	1,560	62	14	853	-	1,602	378	101	177	152	520	63	540	137	59	8	12	528	13,373
Gampaha	311	1,385	968	624	962	-	458	-	46	235	14	-	13	70	284	9	-	-	-	253	36	286	5,954
Kalutara	541	544	449	467	547	-	-	-	-	39	17	-	3	17	50	11	-	-	-	-	-	166	2,851
Kandy	641	1,557	751	884	1,005	12	86	136	-	164	182	41	63	71	195	40	187	-	-	26	40	457	6,538
Matale	158	523	209	243	341	-	-	-	-	16	-	-	-	16	58	22	-	-	-	13	-	36	1,635
Nuwara Eliya	242	486	230	265	514	-	-	-	-	41	-	-	-	9	30	-	-	-	-	-	-	73	1,890
Galle	346	810	677	458	721	-	21	158	-	38	48	20	14	41	87	43	62	-	-	29	21	132	3,726
Matara	178	590	340	380	527	-	-	-	-	16	17	-	16	-	45	27	37	-	-	-	-	108	2,281
Hambantota	63	711	248	329	404	-	-	-	-	15	-	-	-	25	18	-	-	-	-	-	-	56	1,869
Jaffna	204	732	458	324	485	-	24	60	-	70	-	-	20	-	66	24	14	-	-	-	-	156	2,637
Kilinochchi	-	133	46	47	78	-	-	-	-	-	-	-	-	-	-	-	-	-	-	-	-	15	319
Mannar	32	233	64	78	213	-	-	-	-	15	-	-	-	-	20	-	-	-	-	-	-	13	668
Vavuniya	48	161	153	143	239	-	17	-	-	11	-	-	-	25	21	-	50	-	-	-	-	52	920
Mullaitivu	64	-	-	-	-	-	-	-	-	-	-	-	-	-	-	-	-	-	-	-	-	-	64
Batticaloa	149	517	297	342	340	-	17	33	-	28	-	-	-	30	51	15	53	-	-	-	-	104	1,976
Ampara	237	220	115	118	214	-	-	-	-	19	-	-	-	-	36	-	29	-	-	-	-	42	1,030
Trincomalee	84	418	187	190	300	-	-	-	-	-	-	-	-	-	39	-	31	-	-	-	-	49	1,298
Kaimuna	68	587	260	387	440	-	-	-	-	34	-	-	-	-	30	-	-	-	-	-	-	200	2,006
Kurunegala	778	1,585	485	637	931	-	-	100	-	44	41	25	16	29	105	55	121	58	-	56	39	333	5,438
Puttalam	240	429	293	276	551	24	18	-	-	-	-	-	-	26	49	7	64	-	-	-	-	59	2,036
Anuradhapura	112	1,449	199	569	683	31	-	61	-	46	57	28	38	-	30	24	67	-	-	6	-	275	3,675
Polonnaruwa	183	367	134	242	274	10	-	-	-	-	-	-	-	-	46	-	-	-	-	39	-	54	1,349
Badulla	429	787	491	457	670	-	-	104	-	58	30	29	29	-	56	25	58	-	-	48	22	88	3,381
Monaragala	376	264	109	294	284	-	-	-	-	-	-	-	-	-	33	-	-	-	-	-	-	35	1,395
Ratnapura	388	907	462	494	763	-	16	-	-	25	22	-	21	23	74	27	59	-	-	-	19	116	3,416
Kegalle	169	635	397	333	478	-	-	-	-	21	-	-	-	33	41	-	-	-	-	-	-	107	2,214
Sri Lanka	7,349	18,072	9,732	10,128	13,524	139	671	1,505	46	2,537	806	244	410	567	1,984	392	1,372	195	59	478	189	3,540	73,939

Source: Medical Statistics Unit

Includes:

¹ Beds in medical and surgical intensive care units, wards for priests, service personnel and surgical paying wards

² Beds in the premature baby units

³ Mixed wards with beds for obstetrics, psychiatry, skin, ENT, eye, dental, neurology, surgery, tuberculous and haematology

Table 9. Key Health Personnel, 1990 - 2011

Year	Medical Officers ¹		Dental Surgeons ²		Registered/Assistant Medical Officers		Nurses		Public Health Nursing Sisters		Public Health Inspectors		Public Health Midwives		Hospital Midwives	
	No.	Rate	No.	Rate	No.	Rate	No.	Rate	No.	Rate	No.	Rate	No.	Rate	No.	Rate
1990 ³	2,440	15.5	317	2.0	1,074	6.8	8,957	57.1	140	0.9	886	5.5	3,321	21.2	1,638	10.4
1991	2,934	17.0	358	2.1	1,201	7.0	9,934	57.6	101	0.6	914	5.3	3,583	20.8	1,776	10.3
1992	3,345	19.2	381	2.2	1,253	7.2	11,214	64.4	113	0.6	846	5.0	4,108	23.6	2,025	11.6
1993	3,713	21.1	390	2.2	1,305	7.4	11,818	67.1	109	0.6	876	5.0	4,361	24.8	2,172	12.3
1994	4,047	22.7	387	2.2	1,357	7.6	13,060	73.1	117	0.7	928	5.2	4,400	24.6	2,214	12.4
1995	4,577	25.3	421	2.3	1,376	7.6	13,403	74.0	174	1.0	932	5.1	4,383	24.2	2,288	12.6
1996	5,117	27.9	462	2.5	1,397	7.6	13,933	79.1	189	1.0	915	5.0	4,352	23.8	2,393	13.1
1997	5,628	30.1	481	2.6	1,384	7.4	13,815	73.8	145	0.8	901	4.8	4,497	24.0	2,284	12.2
1998	6,427	34.2	521	2.8	1,340	7.1	14,448	77.0	183	1.0	888	4.7	4,578	24.4	2,410	12.8
1999	6,994	36.7	529	2.8	1,340	7.0	14,052	73.8	237	1.2	1,142	6.0	4,625	24.3	2,503	13.1
2000	7,963	41.1	637	3.3	1,349	7.0	14,716	76.0	270	1.4	1,486	7.7	4,798	24.8	2,596	13.4
2001	8,384	44.8	751	4.0	1,343	7.2	15,797	84.4	259	1.4	1,401	7.5	4,654	24.9	2,723	14.5
2002	9,290	48.9	867	4.6	1,326	7.0	16,517	86.9	310	1.6	1,470	7.7	4,819	25.4	2,794	14.7
2003	NA	NA	NA	NA	NA	NA	NA	NA	NA	NA	NA	NA	NA	NA	NA	NA
2004	8,874	45.6	915	4.7	1,218	6.3	18,654	95.8	315	1.6	1,397	7.2	4,524	23.2	2,668	13.7
2005	10,198	51.9	954	4.9	1,274	6.5	19,934	101.4	313	1.6	1,512	7.7	4,896	24.9	2,371	12.1
2006	10,279	51.7	1,181*	5.9	1,183	5.9	24,988	125.7	299	1.5	1,535	7.7	5,080	25.5	2,555	12.8
2007	11,023	55.1	1,314*	6.6	1,194	6.0	31,466	157.3	290	1.4	1,740	8.7	6,167	30.8	2,828	14.1
2008	12,479	61.7	858	4.2	1,134	5.6	30,063	148.7	270	1.3	1,475	7.3	5,331	26.4	3,016	14.9
2009 ⁴	13,737	67.1	1,046	5.1	1,084	5.3	31,297	153.0	264	1.3	1,398	6.8	5,389	26.3	2,768	13.5
2010 ⁴	14,668	71.0	1,139	5.5	1,107	5.4	35,367	171.1	380	1.8	1,436	7.0	5,477	26.5	2,971	14.4
2011 ⁴	15,273	73.2	1,147	5.5	1,063	5.1	35,870	171.9	349	1.7	1,501	7.2	5,491	26.3	2,884	13.8

* Provisional

NA - Not Available

Rate per 100,000 Population

¹ All Medical Officers in curative, administrative and preventive services including specialists and interns

² Includes Regional and Consultant Dental Surgeons

³ Excludes the Northern Province

⁴ Used provisional mid-year population for calculating the rate

Note : All PGIM trainees were included in Dental Surgeons category in 2007 based on 2006 estimates which was not corrected.

In 2008, this was revised by including PGIM trainees in Medical Officers category. Therefore the total Dental Surgeons category has reduced in 2008.

Source : Medical Statistics Unit

Table 10. Distribution of Health Personnel by Regional Director of Health Services Division, December 2011

RDHS Division	Medical Officers														Total Medical Officers ²	Regional Dental Surgeons	Consultant Dental Surgeons	Hospital Dental Surgeons	P.G.I.M Trainees**	Dental Surgeons ³					
	Administrative Grade (Senior and Deputy)	Specialists (Curative Care)	Hospital Medical Officers (D.M.O., S.H.O., H.O., M.O., OPD, etc.)	DDHS/MOH/AMOH	School Medical Officers	Medical Officers (Malaria)	Medical Officers (Filaria)	Medical Officers (Leprosy)	Medical Officers (Venereal Diseases)	Medical Officers (Tuberculosis)	Epidemiologists	Medical Officers (Maternal and Child Health)	Judicial Medical Officers	Medical Officers (Blood Bank)							Internee Medical Officers	P.G.I.M Trainees**	Other Medical Officers	Medical Officers ¹	
Colombo	81	428	2,652	44	5	2	3	-	14	2	1	6	19	391	209	166	123	3,637	4,146	1	35	176	32	244	
Gampaha	9	94	851	53	-	-	-	-	1	-	1	-	7	36	162	-	14	1,125	1,228	3	3	75	1	82	
Kalutara	11	44	444	42	2	-	1	-	2	1	1	2	4	13	98	9	14	633	688	2	7	52	7	68	
Kandy	13	152	988	40	4	-	-	-	7	1	1	2	3	6	162	111	44	1,369	1,534	3	6	115	6	130	
Matale	3	27	198	14	-	2	-	-	2	6	1	1	3	2	44	5	8	286	316	2	1	20	4	27	
Nuwara Eliya	5	27	176	16	-	-	-	-	1	4	1	3	2	12	45	2	4	266	298	1	2	18	24	45	
Galle	10	75	526	33	1	1	1	-	-	2	1	1	1	26	67	81	8	749	834	2	7	40	2	51	
Matara	3	34	289	33	1	-	1	-	2	2	1	1	1	9	47	1	2	390	427	2	1	25	-	28	
Hambantota	3	26	201	15	1	-	-	-	1	2	1	1	1	3	32	-	6	264	293	1	-	19	10	30	
Jaffna	6	43	285	3	-	-	-	-	-	-	1	1	2	8	56	8	3	367	416	1	1	24	4	30	
Kilinochchi	-	-	38	-	-	-	-	-	-	-	-	-	-	-	-	-	3	41	41	-	-	4	-	4	
Mannar	2	5	55	4	-	-	-	-	1	1	-	-	2	2	-	-	1	66	73	-	-	6	1	7	
Vavuniya	1	18	94	7	1	1	-	-	2	2	-	-	2	4	-	38	19	170	189	-	-	10	-	10	
Mullaitivu	NR	NR	NR	NR	NR	NR	NR	NR	NR	NR	NR	NR	NR	NR	NR	NR	NR	NR	NR	NR	NR	NR	NR	NR	NR
Batticaloa	7	25	220	11	-	1	-	-	-	1	1	1	-	5	61	1	6	308	340	2	-	23	3	28	
Ampara	2	24	226	11	-	-	-	-	2	3	1	2	2	6	-	-	3	256	282	-	-	12	1	13	
Trincomalee	5	25	161	16	-	1	-	-	1	-	1	1	3	8	44	-	9	245	275	2	-	15	2	19	
Kalmunai	4	11	217	12	-	-	-	-	-	3	-	9	3	8	8	-	7	267	282	1	-	23	2	26	
Kurunegala	6	107	627	43	-	-	1	-	3	-	1	2	5	14	37	-	10	743	856	-	1	51	16	68	
Puttalam	4	34	257	17	-	-	-	-	2	4	-	-	3	6	65	2	2	358	396	2	2	32	3	39	
Anuradhapura	2	33	330	25	-	-	-	-	1	2	1	2	1	-	2	-	2	366	401	1	3	31	1	36	
Polonnaruwa	2	20	143	12	-	-	-	-	1	4	1	1	2	4	38	5	-	211	233	1	1	20	-	22	
Badulla	4	43	347	19	-	-	-	-	2	-	-	1	3	-	53	-	9	434	481	-	-	44	2	46	
Monaragala	3	19	150	19	-	-	-	-	-	1	1	2	-	6	39	-	4	222	244	1	1	17	6	25	
Ratnapura	6	50	346	32	-	1	-	-	2	-	-	1	8	16	24	-	12	442	498	1	3	35	4	43	
Kegalle	4	34	362	19	-	-	-	-	-	3	1	-	6	11	49	1	12	464	502	1	-	24	1	26	
Total	196	1,398	10,183	540	15	9	7	-	47	44	18	40	83	596	1,342	430	325	13,679	15,273	30	74	911	132	1,147	

** Include PGIM trainees drawing their salaries from the institutions concerned

¹ Total Medical Officers, Exclude: Administrative and Specialists

² Total Medical Officers

³ Total Dental Surgeons

NR - Not Responded

Continued...
Source: Medical Statistics Unit

Table 10. Distribution of Health Personnel by Regional Director of Health Services Division, December 2011

RDHS Division	Registered/Assistant Medical Officers	Matrons	Ward Sisters	Principals/Sister Tutors	Nursing Officers	Supervising Public Health Nursing Sisters/Public Health Nursing Sisters	Pupil Nurses	Total Nurses	MRO	PO	SSO	MRA	PPA	Total Medical Recording Officers	Pharmacists	Medical Laboratory Technologists	Radiographers	Physiotherapists	Occupational Therapists	School Dental Therapists	Dental Technician	Entomological Assistant
Colombo	169	49	307	71	7,671	49	866	9,013	8	12	-	11	60	91	366	521	195	134	28	56	21	19
Gampaha	116	15	93	20	2,311	38	466	2,943	3	-	-	8	29	40	103	88	35	45	17	37	1	-
Kalutara	61	8	119	10	1,203	29	191	1,560	1	1	-	8	20	30	53	66	17	7	3	33	1	4
Kandy	134	22	102	21	3,101	29	870	4,145	7	43	18	24	14	106	113	115	66	37	8	31	4	8
Matale	30	6	24	-	496	13	-	539	1	10	11	9	4	35	26	23	6	4	1	11	1	7
Nuwara Eliya	20	4	4	-	373	11	-	392	-	7	2	9	4	22	16	19	7	3	1	6	1	-
Galle	77	7	44	3	1,683	29	537	2,303	2	2	-	6	53	63	66	57	26	19	3	25	4	4
Matara	50	6	43	-	942	11	49	1,051	-	-	1	3	41	45	42	34	11	8	2	31	-	6
Hambantota	13	6	23	1	694	7	-	731	-	-	-	1	28	29	34	40	11	4	1	14	-	7
Jaffna	22	2	67	8	433	2	285	797	-	1	-	2	-	3	39	25	18	8	1	9	-	1
Kilinochchi	-	-	6	-	59	-	-	65	-	4	18	-	18	-	3	2	2	1	2	-	-	2
Mannar	1	1	6	-	112	1	-	120	-	-	-	-	17	17	7	6	2	4	1	-	-	1
Vavuniya	2	2	14	-	200	1	-	217	-	1	-	-	16	17	13	18	5	3	-	3	-	2
Mullaitivu	NR	NR	NR	NR	NR	NR	NR	NR	NR	NR	NR	NR	NR	NR	NR	NR	NR	NR	NR	NR	NR	NR
Batticaloa	20	10	39	5	525	13	171	763	-	8	-	1	10	19	29	26	12	8	3	2	-	-
Ampara	3	6	7	18	432	5	230	698	-	-	-	-	6	6	26	26	8	4	1	3	-	3
Trincomalee	7	4	8	-	383	2	-	397	-	1	-	-	-	1	22	21	6	5	1	2	-	2
Kalmunai	18	4	10	-	527	7	-	548	-	8	-	3	6	17	29	33	12	3	-	3	-	3
Kurunegala	112	18	98	38	1,985	28	371	2,538	4	-	-	41	32	77	77	80	22	14	3	35	3	4
Puttalam	31	7	39	-	581	8	-	635	-	-	-	4	9	13	29	37	8	4	1	6	1	3
Anuradhapura	31	7	32	17	1,039	12	236	1,343	-	-	1	3	12	16	42	49	19	8	2	12	2	-
Polonnaruwa	12	6	5	-	507	6	-	524	-	-	-	2	12	14	30	25	8	8	2	9	-	4
Badulla	32	11	44	18	983	13	229	1,298	1	3	-	9	31	44	52	56	19	15	3	13	1	4
Monaragala	10	3	13	-	395	9	-	420	-	-	1	9	22	32	23	21	8	4	-	11	-	3
Ratnapura	39	6	39	19	1,258	17	507	1,846	1	2	-	3	25	31	52	54	22	12	2	22	1	6
Kegalle	53	8	41	-	926	9	-	984	-	1	-	6	33	40	44	38	16	6	-	12	5	2
Total	1,063	218	1,227	249	28,819	349	5,008	35,870	28	104	52	162	502	808	1,336	1,480	560	369	84	386	46	95

NR - Not Responded

Continued..

Source: Medical Statistics Unit

Table 10. Distribution of Health Personnel by Regional Director of Health Services Division, December 2011

RDHS Division	Ophthalmic Technicians	Food and Drug Inspectors	Supervising Public Health Inspectors	Public Health Inspectors	Supervising Public Health Midwives	Public health Midwives	Hospital Midwives	ECG Recordists	EEG Recordists	Microscopists	Dispensers	Public Health Field Officers	Foremen	Audiology Technicians	Workmen Technicians	Orthapdic Technicians	Cinema Technicians	Assistant Technicians	Attendants	Other Reported	
Colombo	38	17	19	212	5	389	235	91	23	32	101	14	2	3	8	5	1	2	1,397	6,534	
Gampaha	13	3	12	127	1	521	189	19	4	21	74	23	-	-	-	2	-	-	448	2,290	
Kalutara	8	2	7	84	8	422	161	10	2	12	43	20	-	1	-	-	1	-	386	1,167	
Kandy	9	2	9	79	22	457	221	14	2	11	95	12	-	3	-	-	-	-	610	3,845	
Matale	4	5	3	39	9	166	82	5	-	9	39	11	-	-	-	-	-	-	196	603	
Nuwara Eliya	3	1	3	31	6	169	85	3	1	1	43	7	-	-	-	-	-	-	165	899	
Galle	9	1	7	86	10	283	169	18	3	8	64	7	-	1	-	-	-	-	365	1,876	
Matara	5	1	13	72	14	268	151	9	2	15	36	22	-	1	-	-	1	1	274	1,150	
Hambantota	2	2	9	48	14	201	106	5	-	9	39	30	2	-	-	-	-	-	200	908	
Jaffna	1	1	1	59	11	142	83	-	1	4	58	17	-	-	-	-	1	-	478	862	
Kilinochchi	-	-	4	7	7	47	24	-	-	2	9	14	-	-	-	-	-	-	59	304	
Mannar	-	-	2	19	3	65	34	-	-	-	11	7	-	-	-	-	-	-	69	305	
Vavuniya	3	-	2	13	3	68	33	2	-	-	17	2	-	-	-	-	-	-	95	469	
Mullaitivu	NR	NR	NR	NR	NR	NR	NR	NR	NR	NR	NR	NR	NR	NR	NR	NR	NR	NR	NR	NR	NR
Batticaloa	2	1	8	57	15	115	106	9	1	3	37	33	-	2	-	-	-	-	168	1,050	
Ampara	3	1	3	27	9	70	27	6	1	5	25	12	-	-	-	-	-	-	96	722	
Trincomalee	4	-	8	35	10	122	73	3	-	4	29	15	-	-	-	-	-	-	223	742	
Kalmunai	-	1	10	50	9	133	130	13	1	8	29	29	-	-	-	1	-	-	128	1,003	
Kurunegala	4	2	13	75	25	395	250	14	4	42	104	51	1	1	-	-	-	-	603	2,800	
Puttalam	4	2	9	33	6	164	58	7	2	13	44	21	-	-	-	-	-	-	142	696	
Anuradhapura	2	1	13	68	21	228	148	9	3	35	70	30	-	1	-	-	-	-	420	1,629	
Polonnaruwa	3	1	6	30	6	118	51	6	-	8	28	11	-	-	-	-	-	-	170	662	
Badulla	9	-	10	53	12	232	131	10	2	10	75	5	-	-	-	-	-	-	252	1,779	
Monaragala	2	1	8	33	12	153	82	5	-	9	39	11	-	-	-	-	-	-	229	765	
Ratnapura	13	-	17	90	14	307	137	8	1	17	56	9	-	-	-	-	-	-	292	1,705	
Kegalle	4	2	12	74	9	256	118	4	-	6	46	13	2	-	-	-	-	-	220	1,180	
Total	145	47	208	1,501	261	5,491	2,884	270	53	284	1,211	426	7	13	8	8	3	3	7,685	35,945	

Source: Medical Statistics Unit

NR - Not Responded

Table 11. Distribution of Specialists in Curative Care Services by Regional Director of Health Services Division, December 2011

RDHS Divisions	General Physician	General Surgeon	Obstetricians & Gynaecologists	Cardiologist	Chest Physician	Thoracic Surgeons	Neurologist	Neuro Surgeons	Dermatologists	Rheumatologists	Phychiatrists	Paediatricians	Paediatric Surgeons	ENT Surgeons	Eye Surgeons	Orthopedic Surgeons	Plastic Surgeons	Genito Urinary Surgeons	Anesthesiologists	Histo-Pathologists / Chemical Pathologists	Haematologists	Bacteriologists / Microbiologists	Biochemist	Oncologists / Radiotherapists	Oncology Surgeons	Radiologists	Venerologists	Mycologists	Public Health / Community Health Physicians	Specialist Dental Surgeons-Orthodontists	Specialist Dental Surgeons-Maxillofacial / Restorative	Others ²
Colombo	42	35	41	20	5	10	8	3	8	5	24	39	4	7	15	8	6	6	42	20	10	16	6	11	3	20	6	-	8	4	10	50
Gampaha	11	8	9	2	3	2	1	-	4	2	3	10	-	3	5	1	-	1	7	5	1	1	-	-	-	6	-	-	-	1	2	7
Kalutara	4	4	5	1	2	-	1	-	2	1	1	5	-	1	3	1	-	-	5	3	1	1	-	-	-	2	-	-	1	1	2	
Kandy	28	11	17	5	4	4	7	1	4	1	10	20	3	6	5	3	1	7	16	15	4	7	1	7	1	13	1	-	7	3	1	13
Matale	4	3	3	-	2	-	-	-	2	-	1	3	-	1	2	-	-	-	2	1	-	-	-	-	-	2	-	-	-	-	1	1
Nuwara Eliya	2	2	2	-	2	-	-	-	1	-	1	2	-	1	1	-	-	-	2	1	-	-	-	-	-	1	-	-	-	-	1	1
Galle	17	11	13	1	1	2	2	1	3	1	4	13	1	1	3	2	-	1	10	8	2	3	-	2	1	4	-	2	1	1	4	
Matara	5	3	3	1	-	-	1	-	2	1	1	5	-	1	1	1	-	-	2	1	1	1	-	-	-	1	-	-	-	-	1	3
Hambantota	6	2	4	-	-	-	-	-	2	-	1	3	-	1	1	-	-	-	2	1	1	-	-	-	-	1	-	-	-	-	1	1
Jaffna	1	-	-	-	-	-	-	-	-	-	-	3	-	1	1	-	-	-	2	-	-	-	-	-	-	-	-	-	-	-	-	1
Vavuniya	4	2	2	-	-	-	1	-	1	-	1	1	-	1	1	-	-	-	1	-	2	-	-	-	-	1	-	-	-	-	-	1
Mannar	1	1	1	-	-	-	-	-	-	-	-	1	-	-	-	-	-	-	1	-	-	-	-	-	-	-	-	-	-	-	-	-
Batticaloa	4	3	3	1	-	-	1	-	1	-	-	3	-	2	1	1	-	-	1	1	-	-	-	-	1	1	-	-	-	-	-	1
Ampara	3	2	2	1	-	-	-	-	1	-	-	2	-	-	1	1	-	-	1	1	1	1	-	-	-	-	-	-	-	-	-	-
Kalmunai	5	2	3	-	-	-	-	-	-	-	1	1	-	-	1	1	-	-	-	-	-	-	-	-	-	1	-	-	-	-	-	-
Trincomalee	5	4	5	-	-	-	-	-	2	-	1	3	-	1	2	1	-	-	2	1	1	-	-	-	-	2	-	-	-	-	-	-
Kurunegala	11	6	8	4	2	4	1	1	5	1	2	7	1	3	4	2	1	1	8	5	1	1	1	1	3	1	6	1	-	2	2	21
Puttalam	4	3	4	-	-	-	-	-	2	-	1	4	-	1	1	1	-	-	3	1	1	-	-	-	-	2	-	-	-	-	-	1
Anuradhapura	6	2	2	1	-	-	1	1	1	1	1	3	-	1	1	1	-	1	2	1	1	1	-	1	-	1	-	-	-	-	-	2
Polonnaruwa	4	2	4	-	-	-	-	-	1	1	1	3	-	1	1	1	-	-	1	1	1	1	-	-	-	-	-	-	-	-	-	-
Badulla	6	4	4	-	2	-	1	1	4	1	1	5	-	2	2	1	-	-	3	1	1	1	-	1	1	2	-	-	-	-	-	1
Monaragala	4	3	2	-	-	-	-	-	1	1	1	3	-	1	1	-	-	-	2	1	1	1	-	-	-	1	-	-	-	-	-	1
Rathnapura	6	4	6	2	-	-	1	-	2	1	1	5	-	1	2	1	-	1	3	3	1	1	-	-	1	2	-	-	-	-	-	4
Kegalle	5	4	4	-	1	-	-	-	2	-	1	6	-	2	1	1	-	-	2	1	1	-	-	-	-	1	-	-	-	-	-	1
Total	188	121	147	39	24	22	21	8	51	16	57	147	9	38	54	27	8	13	117	72	32	30	8	22	8	72	8	1	17	16	24	115

¹ Includes specialists of the Faculties of Medicine working in Teaching Hospitals

² Includes Virologists, Consultant JMO's, Immunologists, Parasitologists, Nephrologists and Neonatologists

Note: Kilinochchi and Mullaitivu districts were not responded

Source : Medical Statistics Unit

ANNUAL HEALTH STATISTICS - 2011

Table 12. National Expenditure, Health Expenditure and GNP, 2006 - 2011

Item	2006	2007	2008	2009	2010	2011
National Expenditure (Rs. million)	713,145	885,952	996,126	1,747,064	1,751,113	1,961,053
Health Expenditure (Rs. million)	54,363	63,464	68,604	67,448	80,027	82,179
Health Expenditure as a % of National Expenditure	7.6	4.9	6.9	3.9	4.6	4.2
Per Capita Health Expenditure (Rs.)	2,734	3,171	3,393	3,298	3,875	3,938
GNP (Rs. billion)	2,790	3,540	4,312	4,769	5,530	6,472
Health Expenditure as a % of GNP	1.95	1.79	1.59	1.41	1.45	1.26

Source: Management Development and Planning Unit, Department of Health Services

Table 13. Summary of Health Expenditure and Source of Fund, 2006 - 2011

Item	2006	2007	2008	2009	2010	2011
Health Expenditure						
Recurrent Expenditure	45,781	54,737	57,956	57,953	67,213	69,801
Capital Expenditure	8,583	8,727	10,649	9,495	12,814	12,378
Total	54,364	63,464	68,604	67,448	80,027	82,179
Source of Fund						
Consolidated Fund	50,995	60,931	65,677	65,286	74,048	79,433
Foreign Aid	3,369	2,533	2,927	2,162	5,979	2,745
Total	54,364	63,464	68,604	67,448	80,027	82,178

Source: Management Development and Planning Unit, Department of Health Services

ANNUAL HEALTH STATISTICS - 2011

Table 14. Summary of Health Expenditure by Programme, 2011

Programme	Health Expenditure 2011 (Rs. million)		
	Ministry of Health	Provincial Health	Total
Recurrent Expenditure			
01. Operational Activities	47,073.91		
01. Minister's Office	63.45		
02. Ministry Administration and Establishment Services	692.78		
03. Medical Supply Division	16,834.26		
04. National Drugs Quality Control Unit	34.93		
06. Teaching Hospital Maintenance	13,747.51		
07. District General and Base Hospital Maintenance	9,104.96		
08. Special Hospitals and Treatment Units Maintenance	4,974.72		
09. Other Hospital Maintenance	673.40		
10. Co-operated Hospitals	947.90		
02. Development Activities	5,920.69		
11. Human Resources Development	3,894.67		
14. Health Promotion and Diseases Prevention	514.35		
16. National Nutrition Programme	1,335.52		
17. Medical Research	176.15		
Total	52,994.60	16,806.00	69,800.60
Capital Expenditure			
01. Operational Activities	469.51		
01. Minister's Office	39.19		
02. Ministry Administration and Establishment Services	159.23		
03. Medical Supply Division	42.42		
06. Teaching Hospital Maintenance	1.10		
10. Co-operated Hospitals	227.57		
02. Development Activities	9,889.52		
11. Human Resources Development	80.65		
12. Relief and Reconstruction in Tsunami Affected Areas	49.51		
13. Hospital Development Projects	7,689.62		
14. Health Promotion and Diseases Prevention	556.83		
15. Control of Communicable and Non Communicable	1,474.05		
16. National Nutrition Programme	19.33		
17. Medical Research	19.53		
Total	10,359.03	2,019.00	12,378.03
Total Health Expenditure			
01. Operational Activities	47,543.42		
01. Minister's Office	102.64		
02. Ministry Administration and Establishment Services	852.01		
03. Medical Supply Division	16,876.68		
04. National Drugs Quality Control Unit	34.93		
06. Teaching Hospital Maintenance	13,748.61		
07. District General and Base Hospital Maintenance	9,104.96		
08. Special Hospitals and Treatment Units Maintenance	4,974.72		
09. Other Hospital Maintenance	673.40		
10. Co-operated Hospitals	1,175.47		
02. Development Activities	15,810.21		
11. Human Resources Development	3,975.32		
12. Relief and Reconstruction in Tsunami Affected Areas	49.51		
13. Hospital Development Projects	7,689.62		
14. Health Promotion and Diseases Prevention	1,071.18		
15. Control Of Communicable and Non Communicable	1,474.05		
16. National Nutrition Programme	1,354.85		
17. Medical Research	195.68		
Total	63,353.63	18,825.00	82,178.63

*Source : Management Development and Planning Unit,
Department of Health Services*

ANNUAL HEALTH STATISTICS - 2011

Table 15. Indoor Morbidity and Mortality Statistics by Broad Disease Groups, 2011

	Disease Group	Total*	Live Discharges (%)									Deaths
			Sex		Age Group							
			Male	Female	under 1	1 - 4	5 - 16	17 - 49	50 -69	70+	Not Known	
1	Intestinal infectious diseases (A00-A09)	142,879	48.2	51.8	10.6	22.6	16.2	27.5	15.2	7.8	0.1	67
2	Tuberculosis (A15-A18)	9,739	69.3	30.7	0.4	1.1	2.5	42.1	40.3	13.4	0.1	333
3	Other bacterial diseases (A20-A49)	21,878	69.5	30.5	9.6	4.5	6.4	52.3	23.3	3.8	0.1	2,644
4	Infections with sexual mode of transmission (A50-A64)	285	36.4	63.6	1.1	2.5	8.1	65.4	14.8	2.1	3.9	2
5	Viral diseases (A80-B34)	279,767	54.9	45.1	5.5	14.9	18.9	42.2	13.7	4.7	0.0	780
6	Malaria (B50-B54)	155	74.8	25.2	0.6	4.5	10.3	66.5	14.8	3.2	0.0	0
7	Helminthiases (B76,B77,B79,B80)	213	60.6	39.4	4.2	38.0	32.4	11.3	10.8	3.3	0.0	0
8	Other infectious and parasitic diseases	8,567	52.3	47.7	4.9	16.4	19.5	37.4	17.0	4.7	0.0	10
9	Neoplasms (C00-D48)	92,035	43.3	56.7	0.4	2.7	4.5	30.0	48.9	13.5	0.0	4,631
10	Iron deficiency anaemias (D50)	5,993	36.9	63.1	0.7	4.1	8.6	39.6	29.3	17.7	0.0	23
11	Haem. con. and other diseases of blood and ... (D51-D89)	21,041	48.0	52.0	2.2	10.1	25.2	30.0	20.2	12.1	0.1	106
12	Diabetes mellitus (E10-E14)	72,924	45.6	54.4	0.0	0.2	1.0	27.9	52.4	18.3	0.1	744
13	Malnutrition and vitamin deficiencies (E40-E46,E50-E56)	1,508	50.9	49.1	5.2	18.6	10.5	22.5	28.8	14.4	0.0	12
14	Oth eno, nutr and metabo... (E00-E07,E15-E34,E58-E89)	21,381	32.6	67.4	1.1	2.1	5.8	43.7	33.7	13.3	0.1	90
15	Mental and behavioural disorders (F00-F99)	45,709	55.6	44.4	0.0	0.3	3.7	62.9	26.5	6.0	0.3	0
16	Diseases of the nervous system (G00-G98)	67,160	50.0	50.0	2.6	5.5	12.0	44.7	25.2	9.8	0.1	533
17	Diseases of the eye and adnexa (H00-H59)	135,012	50.1	49.9	0.8	2.9	6.8	24.1	42.2	23.0	0.0	0
18	Dis of the ear.. (H60-H61,H65-H74,H80-H83,H90-H95)	37,642	50.1	49.9	4.0	13.3	19.7	36.7	19.6	6.5	0.0	2
19	Rheum. fever and rheum. heart dis. (I00-I02,I05-I09)	4,290	38.7	61.3	0.1	2.1	11.3	41.6	30.7	14.1	0.1	36
20	Hypertensive diseases (I10-I15)	98,729	41.7	58.3	0.0	0.0	0.0	19.4	48.9	31.2	0.3	612
21	Ischaemic heart disease (I20-I25)	100,332	54.5	45.5	0.0	0.0	0.2	19.5	52.5	27.4	0.1	5,289
22	Other heart diseases (I26-I51)	36,462	51.8	48.2	0.3	0.3	1.6	22.9	43.9	30.6	0.1	3,397
23	Cerebrovascular disease (I60-I69)	37,558	58.7	41.3	0.0	0.1	0.3	12.5	45.5	41.0	0.1	3,409
24	Other diseases of the circulatory system (I70-I84)	39,419	62.6	37.4	0.2	0.7	1.8	42.3	41.4	13.5	0.0	171
25	Influenza (J10-J11)	1,922	44.8	55.2	8.7	15.3	16.1	33.2	18.5	8.2	0.0	10
26	Pneumonia (J12-J18)	23,421	55.0	45.0	13.3	17.8	11.7	21.8	22.8	12.5	0.1	2,064
27	Other dise. of the upper respir. tract (J00-J06,J30-J39)	123,671	51.7	48.3	11.5	22.9	19.3	26.9	13.2	6.1	0.1	25
28	Diseases of the resp. system exclu... (J20-J22, J40-J98)	421,342	53.3	46.7	9.1	14.9	13.5	21.9	25.0	15.4	0.1	2,728
29	Diseases of teeth and supporting structure (K00-K14)	16,786	56.0	44.0	1.1	10.3	21.3	42.0	19.6	5.7	0.0	2
30	Diseases of the gastrointestinal tract (K20-K92)	274,669	54.2	45.8	0.9	3.2	10.5	47.9	27.3	10.0	0.1	2,111
31	Diseases of skin ad subcutaneous tissue (L00-L08,L10-L98)	188,635	57.7	42.3	2.2	7.9	11.7	39.2	28.4	10.6	0.0	47
32	Disorders of the musculoskeletal system (M00-M99)	153,802	52.8	47.2	0.1	1.1	8.0	46.5	31.7	12.3	0.2	48
33	Diseases of the urinary system (N00-N39)	196,487	54.9	45.1	1.8	4.6	7.6	47.3	27.0	11.5	0.1	2,414
34	Diseases of breast (N60-N64)	11,572	10.7	89.3	1.2	1.3	4.7	69.3	20.0	3.5	0.0	1
35	Diseases of the male genital organs (N40-N50)	20,997	100.0	0.0	0.8	7.2	11.5	34.3	27.5	18.6	0.0	3
36	Disor. of female genito-urinary sys. (N70-N98, N99.2, N99.3)	85,225	0.0	100.0	0.1	0.2	2.2	73.3	20.3	3.9	0.0	11
37	Abortions (O00-O08)	49,679	0.0	100.0	0.0	0.0	0.9	97.9	1.0	0.0	0.2	4
38	False labour (O47)	5,347	0.0	100.0	0.0	0.0	0.4	99.4	0.0	0.0	0.2	0
39	Other obstetric conditions and those admitted...	253,252	0.0	100.0	0.0	0.0	0.5	99.2	0.1	0.0	0.1	46
40	Single spontaneous delivery (O80)	233,008	0.0	100.0	0.0	0.0	0.3	99.6	0.0	0.0	0.0	0
41	Slow fetal growth, fetal malnutrition and... (P05-P07)	7,114	50.3	49.7	96.1	2.3	0.0	0.0	0.0	0.0	1.1	708
42	Other conditions originating in the perinatal period (P00-P04, P08-P96)	31,095	48.9	51.1	89.9	3.2	0.0	0.0	0.0	0.0	6.2	898
43	Congenital malformations deformations... (Q00-Q99)	11,594	56.1	43.9	32.0	32.2	16.0	12.0	4.2	0.9	1.8	553
44	Signs, symptoms and abnormal clinical findings (R00-R99)	425,425	50.0	50.0	3.6	8.7	12.5	41.2	23.7	10.2	0.1	1,617
45	Traumatic injuries (S00-T19, W54)	830,603	67.3	32.7	0.7	7.0	16.7	51.8	18.1	5.6	0.0	1,425
46	Burns and corrosion (T20-T32)	15,956	55.6	44.4	2.7	21.8	16.5	43.0	12.3	3.6	0.1	304
47	Toxic effects of pesticides (T60.0,T60.1-T60.9)	22,822	59.9	40.1	0.3	3.4	10.5	72.2	11.4	2.0	0.0	733
48	Snake bites (T63.0)	42,308	60.6	39.4	0.3	2.9	12.4	56.0	23.9	4.3	0.0	135
49	Tox. effe. of ot. sub. oth tha.. (T36-T59,T61-T62,T63.1-T65)	58,198	46.7	53.3	0.9	8.7	15.5	62.0	10.5	2.3	0.1	373
50	Effects of unspecified external causes... (T33-T35,T66-T79)	40,360	54.8	45.2	1.8	7.4	17.6	47.0	20.2	5.9	0.0	137
51	Complications of surgical and medical care... (T80-T88)	7,724	54.9	45.1	2.6	6.4	11.9	43.2	25.7	10.1	0.0	34
52	Sequelae of injuries, poisoning and of other... (T90-T98)	3,644	58.8	41.2	1.7	6.4	12.4	50.1	21.6	7.5	0.3	26
53	Persons encountering health services.... (Z00-Z13,Z40-Z54)	409,907	51.2	48.8	4.1	6.8	11.3	40.7	26.0	10.8	0.0	0
54	Sterilizations (Z30.2)	10,520	2.3	97.7	0.0	0.0	0.0	94.0	3.2	0.0	2.1	0
55	Undiagnosed/Uncoded	353,186	51.5	48.5	3.7	6.7	10.6	42.6	24.9	10.4	0.3	3,167
	Total	5,610,949	48.5	51.5	3.5	7.0	10.7	46.1	22.7	9.7	0.1	42,515

* Total = (Number of Live Discharges + Deaths)

Source : Medical Statistics Unit

Table 16. Trends in Hospital Morbidity and Mortality by Broad Disease Groups, 2004 - 2011

Disease Group by International Classification of Diseases (10 th Revision)	Cases per 100,000 population (Morbidity)										Cases per 100,000 population (Mortality)					
	2004	2005	2006	2007	2008	2009 ^{5,a}	2010 ^{6,a}	2011 ^a	2004	2005	2006	2007	2008	2009 ^{5,a}	2010 ^{6,a}	2011 ^a
1. Certain infectious and parasitic diseases	2,094.2	1,693.8	2,153.6	2,034.8	2,477.8	2,976.1	2,693.2	2,202.5	12.8	13.3	11.5	12.3	13.7	15.5	17.2	18.4
2. Neoplasms	301.7	282.2	289.7	329.0	359.2	368.8	403.2	418.8	15.8	14.0	16.3	17.5	17.2	18.5	21.5	22.2
3. Diseases of the blood & blood-forming organs and certain disorders involving the immune mechanism	75.6	83.6	84.7	95.7	97.2	113.4	124.6	128.9	0.5	0.4	0.5	0.3	0.4	0.5	0.6	0.6
4. Endocrine, nutritional and metabolic diseases	328.1	348.7	377.5	401.6	394.8	455.3	465.1	455.1	3.1	4.0	3.4	3.2	3.3	4.0	4.0	4.1
5. Mental and behavioural disorders	199.8	215.7	211.1	201.6	199.8	195.2	213.7	219.0	0.0	0.0	0.0	0.0	0.0	0.0	0.0	0.0
6. Diseases of the nervous system	249.3	250.2	274.7	293.3	290.0	308.4	313.8	319.3	2.3	2.4	2.7	2.7	2.6	3.2	3.0	2.6
7. Diseases of the eye and adnexa	385.3	418.6	458.1	512.0	580.7	648.4	646.7	647.0	0.0	0.0	0.0	0.0	0.0	0.0	0.0	0.0
8. Diseases of the ear and mastoid process	92.5	96.5	108.9	129.4	141.2	161.9	168.9	180.4	0.0	0.0	0.0	0.0	0.0	0.0	0.0	0.0
9. Diseases of the circulatory system	1,188.2	1,236.0	1,266.6	1,364.6	1,382.9	1,435.7	1,490.1	1,456.1	52.4	52.6	55.6	59.9	59.0	60.6	63.1	61.9
10. Diseases of the respiratory system	2,243.3	2,139.2	2,536.2	2,399.0	2,745.5	2,910.3	2,873.7	2,709.9	18.8	20.2	18.7	18.5	25.0	21.9	24.1	23.1
11. Diseases of the digestive system	1,062.4	1,080.5	1,132.5	1,188.1	1,190.2	1,295.6	1,375.5	1,386.5	15.6	14.3	11.3	12.1	12.4	12.3	12.0	10.1
12. Diseases of the skin and subcutaneous tissue	597.5	591.7	664.7	730.5	725.6	874.4	901.7	903.7	0.0	0.0	0.0	0.0	0.0	0.0	0.0	0.2
13. Diseases of the musculoskeletal system and connective tissue	574.0	585.2	604.8	614.4	643.0	689.3	708.3	736.8	0.2	0.6	0.6	0.2	0.2	0.3	0.2	0.2
14. Diseases of the genitourinary system	1,185.0	1,155.4	1,254.8	1,325.8	1,273.8	1,411.0	1,506.8	1,494.3	6.6	6.5	7.8	9.1	9.1	10.7	11.1	11.6
15. Pregnancy, childbirth and the puerperium ^{1,4}	3,726.0	3,689.4	4,241.8	4,521.3	4,316.0	4,528.6	4,613.9	4,668.2	4.2	3.5	0.9	1.4	1.5	1.1	1.0	0.9
16. Certain conditions originating in the perinatal period ^{2,3}	9,514.7	8,630.2	-	-	-	-	-	-	444.2	417.3	-	-	-	-	-	-
17. Congenital malformations, deformations and chromosomal abnormalities	56.6	59.8	59.9	63.9	64.1	58.5	61.9	52.9	2.5	2.4	2.7	2.8	3.0	2.9	3.1	2.6
18. Symptoms, signs and abnormal clinical and laboratory findings not elsewhere classified	1,320.7	1,317.9	1,545.5	1,633.4	1,827.6	2,180.2	2,143.7	2,030.8	8.9	9.0	7.7	9.1	8.3	10.5	9.7	7.7
19. Injury, poisoning and certain other consequences of external causes	3,361.5	3,460.6	3,809.0	4,090.0	4,200.6	4,585.4	4,832.9	4,880.2	17.0	19.6	17.4	17.1	14.8	17.2	15.2	15.2

Source: Medical Statistics Unit

^a Used provisional mid-year population for calculation¹ Rate per 100,000 females of the reproductive age group² Per 100,000 live births / infant population³ Not calculated for the year 2006-2011 since infant population was not available

Excludes:

⁴ Single spontaneous delivery, false labour and those admitted and discharged before delivery⁵ Kilinochchi and Mullaitivu Districts⁶ Mullaitivu District

Table 17. Trends in Hospitalization and Hospital Deaths of Selected Diseases, 2004 - 2011

Disease and ICD Code	Number of Hospitalizations per 100,000 Population										Number of Deaths per 100,000 Population									
	2004	2005	2006	2007	2008	2009 ^{2,a}	2010 ^{3,a}	2011 ^a	2004	2005	2006	2007	2008	2009 ^{2,a}	2010 ^{3,a}	2011 ^a				
Intestinal infectious diseases (A00-A09)	668.5	670.7	692.9	706.8	627.5	791.6	732.4	684.3	0.9	2.2	0.4	0.4	0.4	0.5	0.4	0.3				
Tuberculosis (A15-A19)	58.0	43.1	37.1	35.2	34.9	38.3	48.7	45.1	3.3	1.7	1.4	1.4	1.4	1.4	2.2	1.6				
Diphtheria (A36)	-	-	-	-	-	-	-	-	-	-	-	-	-	-	-	-				
Whooping cough (A37)	-	-	0.7	-	-	-	-	0.3	-	-	-	-	-	-	-	-				
Septicaemia (A40, A41)	16.7	18.2	20.1	20.3	23.7	27.1	28.2	17.7	5.9	5.9	7.1	8.5	9.0	10.2	11.5	11.3				
Rabies (A82)	0.5	0.3	0.3	0.3	0.3	0.2	0.3	0.7	0.3	0.2	0.2	0.2	0.2	0.1	0.2	0.1				
Measles (B05)	0.7	0.7	0.5	0.7	0.7	0.8	0.7	0.5	-	-	-	-	-	-	-	-				
Viral hepatitis (B15-B19)	19.2	18.5	20.1	33.1	15.2	45.3	14.5	12.4	0.1	-	0.1	-	-	-	-	0.1				
Malaria (B50-B54)	44.8	24.4	11.4	5.2	3.1	5.2	2.9	0.7	0.1	-	-	-	-	-	-	-				
Helminthiasis (B76, B77, B79, B80)	7.1	4.2	2.3	1.5	2.0	2.4	1.1	1.0	-	-	-	-	-	-	-	-				
Diabetes mellitus (E10-E14)	246.8	265.2	296.8	307.3	296.7	343.9	357.2	345.9	2.5	3.4	3.0	2.7	2.9	3.5	3.3	3.6				
Nutritional deficiencies (E40-E46, E50-E56)	8.8	11.7	6.9	7.2	7.9	9.1	6.5	7.2	0.2	0.2	0.1	0.1	0.1	0.2	0.1	0.1				
Anaemias (D50-D64)	62.5	69.6	68.7	74.5	77.2	87.8	96.6	98.7	0.5	0.3	0.4	0.2	0.3	0.4	0.4	0.4				
Hypertensive disease (I10-I15)	417.2	429.1	480.4	469.8	466.4	478.5	476.9	470.2	2.7	3.6	3.0	2.9	2.8	2.6	3.4	2.9				
Ischaemic heart disease (I20-I25)	336.4	353.9	399.9	427.1	423.0	450.4	478.2	455.4	19.2	19.1	20.7	22.7	22.1	23.7	24.8	25.3				
Asthma (J45)	832.1	817.3	910.4	893.5	970.2	973.8	948.2	893.6	4.3	4.3	3.8	3.6	4.1	3.3	3.7	2.9				
Diseases of the liver (K70-K76)	119.8	106.5	85.8	87.3	86.2	84.3	85.1	68.4	13.5	11.6	9.5	10.3	10.5	10.1	9.8	7.8				
Abortions ¹ (O00-O08)	809.1	734.9	841.7	859.4	870.5	878.0	836.1	859.3	0.2	0.4	0.1	0.1	0.1	0.1	-	0.1				

Source : Medical Statistics Unit

^a Used provisional mid-year population for calculation

¹ Rate per 100,000 females of the reproductive age group

Excludes:

² Kilinochchi and Mullaitivu Districts

³ Mullaitivu District

ANNUAL HEALTH STATISTICS - 2011

Table 18. Leading Causes of Hospitalization, 2011 ¹

Rank Order	ICD Code (10 th Revision)	Causes of Hospitalization	Number of Cases	Proportionate Morbidity	Rate per 100,000 Population ²
1	S00-T19	Traumatic injuries	771,969	17.0	3,699.1
2	R00-R99	Symptoms, signs and abnormal clinical and laboratory findings	425,425	9.4	2,038.6
3	J20-J22, J40-J98	Diseases of the respiratory system, excluding diseases of upper respiratory tract	421,342	9.3	2,019.0
4	A80-B34	Viral diseases	279,767	6.2	1,340.6
5	K20-K92	Diseases of the gastrointestinal tract	274,669	6.1	1,316.2
6	O10-O46, O48-O75, O81-O99, Z35	Direct and indirect obstetric causes	220,240	4.9	1,055.3
7	N00-N39	Diseases of the urinary system	196,487	4.3	941.5
8	L00-L99	Diseases of the skin and subcutaneous tissue	188,635	4.2	903.9
9	M00-M99	Diseases of the musculoskeletal system and connective tissue	153,802	3.4	737.0
10	A00-A09	Intestinal infectious diseases	142,879	3.1	684.6
11	H00-H59	Diseases of the eye and adnexa	135,012	3.0	647.0
12	J00-J06, J30-J39	Other dise. of the upper respir. tract	123,671	2.7	592.6
	A00-T98, Z35, Z00-Z13, Z30.2, Z40-Z54, W54	All causes ³	4,537,141	100.0	21,741.1

¹ Excludes Mullaitivu District

Source: Medical Statistics Unit

² Used provisional mid-year population for calculation

³ Analyzed all discharges excluding ,

Single spontaneous delivery, false labour and those admitted and discharged before delivery,
Persons encountering health services for examination, investigation and for specific procedures of health care,
Undiagnosed/Uncoded

Table 19. Leading Causes of Hospital Deaths, 2011 ¹

Rank Order	ICD Code (10 th Revision)	Causes of Death	Number of Deaths	Proportionate Mortality	Rate Per 100,000 Population ²
1	I20 - I25	Ischaemic heart disease	5,289	13.4	25.3
2	C00 - D48	Neoplasms ³	4,631	11.8	22.2
3	I60 - I69	Cerebrovascular disease	3,409	8.7	16.3
4	I26 - I51	Pulmonary heart disease and diseases of the pulmonary circulation	3,397	8.6	16.3
5	J20 - J22, J40 - J98	Diseases of the respiratory system, excluding diseases of the upper respiratory tract	2,728	6.9	13.1
6	A20 - A49	Zoonotic and other bacterial diseases	2,644	6.7	12.7
7	N00 - N39	Diseases of the urinary system	2,414	5.7	11.6
8	K20 - K92	Diseases of the gastrointestinal tract	2,111	5.4	10.1
9	J12 - J18	Pneumonia	2,064	5.2	9.9
10	R00 - R99	Symptoms, signs and abnormal clinical and laboratory findings	1,617	4.1	7.7
11	S00 - T19	Traumatic injuries	1,423	3.6	6.8
12	A00-T98, Z00-Z13, Z35, Z40-Z54, W54	All causes ⁴	39,348	100.0	188.5

¹ Excludes Mullaitivu District

Source: Medical Statistics Unit

² Used provisional mid-year population for calculation

³ Includes deaths reported (not classified by type of neoplasm) from Cancer Institute, Maharagama

⁴ Analysed all deaths excluding undiagnosed/uncoded

Table 20. Leading Causes of Hospitalization, 2000 - 2011 ¹

Disease and ICD (10th Revision) Code	2011		2010 ²		2009 ³		2008		2007		2006		2005		2004		2003		2002 ⁴		2001		2000	
	Rank	%	Rank	%	Rank	%	Rank	%	Rank	%	Rank	%	Rank	%	Rank	%	Rank	%	Rank	%	Rank	%	Rank	%
Traumatic injuries (S00-T19)	1	17.0	1	16.2	1	15.6	1	15.6	1	16.1	1	17.0	1	16.2	1	16.5	1	16.7	1	14.5	1	13.4	1	14.6
Symptoms, signs and abnormal clinical and laboratory findings (R00-R99)	2	9.4	2	9.5	2	9.8	3	9.1	3	8.7	3	8.4	3	7.7	3	8.0	3	7.6	4	6.3	3	5.5	4	5.8
Diseases of the respiratory system excluding diseases of upper respiratory tract (J20-J22, J40-J98)	3	9.3	3	9.4	3	9.6	2	10.3	2	9.7	2	10.4	2	9.3	2	10.0	2	10.8	2	9.7	2	8.1	2	9.6
Viral diseases (A80-B34)	4	6.2	4	7.9	4	9.1	4	8.5	4	6.4	4	7.3	5	5.0	4	7.5	4	6.3	3	6.4	5	4.6	3	6.8
Diseases of the gastro-intestinal tract (K20-K92)	5	6.1	5	5.7	5	5.4	5	5.6	5	5.9	5	5.9	4	5.9	5	6.0	5	6.3	5	5.6	4	5.0	5	5.4
Direct and indirect obstetric causes (O10-O46, O48-O75, O81-O99, Z35)	6	4.9	6	4.7	6	4.6	6	4.8	6	5.4	6	5.1	6	4.7	6	4.9	6	4.7	6	4.0	7	3.3	7	3.6
Diseases of the urinary system (N00-N59)	7	4.3	8	4.0	8	3.8	7	3.7	7	4.0	7	3.9	7	4.0	7	4.1	7	4.1	8	3.8	8	3.2	8	3.5
Diseases of the skin and subcutaneous tissue (L00-L99)	8	4.2	7	4.0	7	3.9	10	3.1	8	3.9	9	3.6	9	3.4	9	3.6	10	3.5	10	3.1	10	2.7	10	3.1
Diseases of the musculoskeletal system and connective tissue (M00-M99)	9	3.4	10	3.2	10	3.1	9	3.2	10	3.3	10	3.3	10	3.4	10	3.5	9	3.6	9	3.3	9	2.9	9	3.3
Intestinal infectious diseases (A00-A09)	10	3.1	9	3.3	9	3.6	8	3.6	9	3.7	8	3.8	8	3.9	8	4.0	8	3.8	7	3.9	6	4.0	6	4.1
Diseases of the eye and adnexa (H00-H59)	11	3.0	11	2.9	12	2.9																		
Diseases of the upper respiratory tract (J00-J06, J30-J39)	12	2.7	12	2.8	11	3.0																		

Source: Medical Statistics Unit

Excludes:
¹ Single spontaneous delivery, false labour and those admitted and discharged before delivery.
² Persons encountering health services for examination, investigation and for specific procedures of health care, Undiagnosed/uncoded

³ Mullaitivu District

⁴ Kilinochchi and Mullaitivu Districts

⁵ Kilinochchi District

Table 21. Leading Causes of Hospital Deaths, 2004 - 2011

Disease and ICD (10 th Revision) Code	2011		2010		2009		2008		2007		2006		2005		2004	
	Rank	%	Rank	%	Rank	%	Rank	%	Rank	%	Rank	%	Rank	%	Rank	%
Ischaemic heart disease (I20-I25)	1	13.4	1	12.8	1	12.8	1	12.5	1	13.1	1	12.6	1	11.4	1	11.6
Neoplasms ¹ (C00-D48)	2	11.8	2	11.1	2	10.0	3	9.8	2	10.1	3	9.9	4	8.3	2	9.5
Cerebrovascular disease (I60-I69)	3	8.7	4	8.7	4	8.4	4	8.7	4	9.2	4	8.9	5	7.7	4	8.9
Pulmonary heart disease and diseases of the pulmonary circulation (I26-I51)	4	8.6	3	8.7	3	9.5	2	10.0	3	10.1	2	10	2	15.4	5	8.4
Diseases of the respiratory system, excluding diseases of upper respiratory tract (J20-J22) (J40-J98)	5	6.9	5	7.0	5	6.7	5	8.0	6	6.5	6	6.9	6	7.3	6	6.8
Zoonotic and other bacterial diseases (A20-A49)	6	6.7	6	6.6	7	6.3	7	6.2	7	5.6	7	4.9	10	4.2	9	4.1
Diseases of the urinary system (N00-N39)	7	5.7	8	5.7	8	5.7	9	5.1	9	5.2	8	4.7				
Diseases of the gastro-intestinal tract (K20-K92)	8	5.4	7	6.2	6	6.6	6	7.0	5	7	5	6.9	3	8.5	3	9.4
Pneumonia (J12-J18)	9	5.2	9	5.2	10	4.9	8	5.9	11	4.0	10	4.4	9	4.3	8	4.3
Symptoms, signs and abnormal clinical and laboratory findings (R00-R99)	10	4.1	10	5.0	9	5.7	10	4.7	8	5.3	9	4.7	7	5.3	7	5.3
Traumatic injuries (S00-T19)	11	3.6	11	3.7	11	4.6	11	3.7	10	4.0	12	3.8	8	5.0		

¹ Includes deaths reported from the Cancer Hospital (not analysed by site and type of neoplasm)

Source: Medical Statistics Unit

Table 22. Leading Causes of Hospitalization by District, 2011 ¹

RDHS Division and Rank Order Disease and ICD (10 th Revision) Code	Sri Lanka	Colombo	Gampaha	Kalutara	Kandy	Matale	Nuwara Eliya	Galle	Matara	Hambantota	Jaffna	Vavuniya	Mannar	Killinochchi	Mullativu	Batticaloa	Ampara ²	Tirincomalee	Kurunegale	Puttalam	Anuradhapura	Polonnaruwa	Badulla	Monaragala	Ratnapura	Kegalle	
Traumatic injuries (S00-T19)	1	1	1	1	1	1	1	1	1	1	1	1	1	1	NR	1	1	1	1	1	1	1	1	1	1	1	1
Symptoms, signs and abnormal clinical and laboratory findings (R00-R99)	2	2	2	3	2	2	3	2	2	2	2	2	4	3	NR	2	3	5	2	2	3	2	3	3	4	4	4
Diseases of the respiratory system excluding diseases of the upper respiratory tract (J20-J22, J40-J98)	3	5	3	2	3	3	2	3	3	3	3	3	2	2	NR	3	2	2	3	3	2	3	2	2	2	2	2
Viral diseases (A80-B34)	4	3	5	5	5	6	6	6	4	4	9	10	5	4	NR	5	5	9	5	6	5	4	5	4	3	5	5
Diseases of the gastrointestinal tract (K20-K92)	5	7	4	4	4	5	4	4	5	5	4	8	3	8	NR	4	4	3	4	5	7	6	4	5	5	3	3
Direct and indirect obstetric causes (Z35, O10-O46, O48 O75, O81-O99)	6	8	6	6	6	7	5	7	6	9	8	4	8	6	NR	6	6	6	6	4	4	5	6	6	9	6	6
Diseases of the urinary system (N00-N39)	7	6	8	8	7	9	10	10	9	7	7	5	11	7	NR	7	8	7	7	10	6	8	7	7	7	8	7
Diseases of the skin and subcutaneous tissue (L00-L99)	8	9	7	7	11	11	12	5	7	6	6	6	9	5	NR	9	7	4	9	8	9	7	8	11	6	7	7
Diseases of the musculoskeletal system and connective tissue (M00-M99)	9	12	10	11	10	12	11	9	8	11	5	7	13	12	NR	8	11	10	8	13	11	10	9	10	10	10	10
Intestinal infectious diseases (A00-A09)	10	14	11	10	12	10	7	12	11	10	11	13	6	11	NR	22	9	11	10	7	8	9	12	9	8	9	9
Diseases of the eye and adnexa (H00-H59)	11	10	9	14	8	4	18	11	12	12	10	9	10	20	NR	12	14	17	15	9	15	11	11	13	11	14	14
Diseases of the upper respiratory tract (J00-J06, J30-J39)	12	15	12	9	13	8	8	14	10	14	12	12	14	19	NR	13	10	12	11	12	10	12	10	12	12	11	11
Ischaemic heart diseases (I20-I25)	13	11	13	12	15	14	13	13	13	13	21	16	17	27	NR	16	15	13	13	15	14	19	15	17	14	13	13

NR - Not Reported

Source: Medical Statistics Unit

¹ Excludes Single spontaneous delivery, false labour and those admitted and discharged before delivery,

Persons encountering health services for examination, investigation and for specific procedures of health care, Undiagnosed/uncoded

² Includes Kalmunai RDHS Division

Table 23. Leading Causes of Hospital Deaths by Regional Director of Health Services Division, 2011

Disease and ICD (10 th Revision) Code	RDHS Division and Rank Order																									
	Sri Lanka	Colombo	Gampaha	Kalutara	Kandy	Matale	Nuwara Eliya	Galle	Matara	Hambantota	Jaffna	Vavuniya	Mannar	Kilinochchi	Mullativu	Batticaloa	Ampara ²	Trincomalee	Kurunegala	Puttalam	Anuradhapura	Polonnaruwa	Badulla	Monaragala	Ratnapura	Kegalle
Ischaemic heart diseases (I20-I25)	1	2	1	3	3	1	1	2	4	1	4	3	1	1	NR	4	1	1	1	1	3	4	1	1	1	1
Neoplasms ¹ (C00-D48)	2	1	6	10	1	5	7	1	10	9	1	4	7	8	NR	9	14	4	4	18	4	8	3	13	5	8
Cerebrovascular disease (I60-I69)	3	5	4	5	2	4	3	3	2	3	3	10	3	20	NR	18	10	7	2	5	5	9	8	5	3	2
Pulmonary heart disease and diseases of the pulmonary circulation (I26-I51)	4	4	2	2	6	2	2	8	1	6	2	6	2	2	NR	1	2	2	6	3	6	5	2	8	2	3
Diseases of the respiratory system, excluding diseases of upper respiratory tract, Pneumonia & influenza (J20-J22, J40-J98)	5	8	5	6	5	3	4	5	3	2	7	9	9	5	NR	7	5	6	3	12	10	3	5	3	4	4
Zoonotic and other bacterial diseases (A20-A49)	6	3	7	4	8	12	9	7	8	4	5	2	5	15	NR	12	4	7	8	8	8	2	7	2	6	5
Diseases of the urinary system (K20-K92)	7	6	10	9	9	6	6	12	8	15	8	1	14	6	NR	11	7	3	9	16	2	1	4	4	9	9
Diseases of the gastro-intestinal tract (N00-N39)	8	7	3	8	11	7	13	9	6	14	9	14	17	11	NR	16	13	5	5	2	11	12	10	10	7	6
Pneumonia (J12-J18)	9	9	7	7	7	12	5	4	5	12	10	10	7	15	NR	14	3	7	7	5	7	6	6	7	8	7
Symptoms, signs and abnormal clinical and laboratory findings (R00-R99)	10	12	12	1	4	8	15	10	7	8	6	4	10	20	NR	2	12	22	13	9	9	11	12	6	16	12
Traumatic injuries (S00-T19)	11	10	9	11	10	11	14	5	14	9	12	8	4	8	NR	6	6	13	14	11	13	10	9	11	11	10
Conditions originating in the perinatal period, excluding disorders related to short gestation, low birth weight, slow fetal growth and fetal malnutrition (P00-P04, P08-P96)	12	14	18	17	12	9	10	11	12	11	14	6	21	3	NR	3	8	18	10	14	16	15	13	12	15	15
Viral diseases (A80-B34, P35.0)	13	15	20	30	22	21	29	21	24	22	22	18	21	20	NR	15	19	16	23	19	1	31	29	18	28	22
Diabetes mellitus (E10-E14)	14	13	11	12	14	15	20	14	17	7	19	21	5	15	NR	22	16	13	17	4	21	16	14	18	18	14
Toxic effects of pesticides (T60.0, T60.1-T60.9)	15	21	17	18	16	14	8	17	13	13	15	13	10	8	NR	16	11	19	11	13	12	6	11	9	10	15
Slow fetal growth, fetal malnutrition and...	16	17	16	14	19	15	11	13	11	19	11	14	21	11	NR	4	9	10	12	15	14	13	16	18	12	20
Hypertensive disease (I10-I15)	17	18	14	15	17	9	17	16	18	5	27	24	14	11	NR	19	14	11	15	7	17	18	15	15	16	13

Source: Medical Statistics Unit

NR - Not Reported

Includes

¹ Deaths reported from Cancer Hospital (not analysed by site and type of neoplasm)

² Kalmunai RDHS Division

Table 24. Cases and Deaths of Poisoning and Case Fatality Rate¹ by Regional Director of Health Services Division, 2011

District	Poisoning by Drugs, Medicaments and Biological Substances		Toxic Effects of Pesticides				Toxic Effects of Other Substances Chiefly Non Medicinal		Total			Case Fatality Rate	
	Cases	Deaths	Organophosphate and Carbamate Insecticides		Other Pesticides		Cases	Deaths	Cases	Deaths	Rate per 100,000 Population ³		
			Cases	Deaths	Cases	Deaths							
Colombo	2,729	7	444	29	421	18	2,762	17	6,356	71	246.0	2.7	1.12
Gampaha	3,491	15	510	32	162	5	1,281	6	5,444	58	248.5	2.6	1.07
Kalutara	1,519	4	218	6	122	3	982	2	2,841	15	248.3	1.3	0.53
Kandy	2,104	2	925	40	312	13	2,052	13	5,393	68	372.7	4.7	1.26
Matale	624	2	600	16	254	12	711	7	2,189	37	434.3	7.3	1.69
Nuwara Eliya	567	2	1,038	25	190	2	1,137	3	2,932	32	381.8	4.2	1.09
Galle	1,760	10	207	15	389	24	1,540	14	3,896	63	355.5	5.7	1.62
Matara	1,105	8	152	3	253	15	1,021	4	2,531	30	298.8	3.5	1.19
Hambantota	1,137	3	905	13	611	8	530	4	3,183	28	552.6	4.9	0.88
Jaffna	717	1	393	25	69	-	2,695	19	3,874	45	627.9	7.3	1.16
Kilinochchi	141	2	181	2	549	1	202	-	1,073	5	670.6	3.1	0.47
Mannar	82	-	56	3	118	1	134	-	390	4	371.4	3.8	1.03
Vavuniya	319	1	246	10	90	-	904	-	1,559	11	880.8	6.2	0.71
Batticaloa	952	16	637	10	281	1	1,001	10	2,871	37	522.0	6.7	1.29
Ampara ²	978	9	463	12	560	15	467	3	2,468	39	377.4	6.0	1.58
Trincomalee	1,118	2	131	2	102	2	532	-	1,883	6	495.5	1.6	0.32
Kurunegala	2,946	10	2,322	75	595	7	2,592	37	8,455	129	536.1	8.2	1.53
Puttalam	1,255	5	587	25	197	-	1,291	31	3,330	61	422.1	7.7	1.83
Anuradhapura	1,864	1	1,595	59	822	14	1,439	2	5,720	76	681.0	9.0	1.33
Polonnaruwa	1,032	3	786	35	323	8	534	6	2,675	52	644.6	12.5	1.94
Badulla	1,076	4	1,128	47	220	4	1,504	18	3,928	73	437.9	8.1	1.86
Monaragala	757	6	832	26	108	4	407	4	2,104	40	472.8	9.0	1.90
Ratnapura	1,610	19	1,082	46	293	7	920	10	3,905	82	342.8	7.2	2.10
Kegalle	821	9	272	9	71	4	856	22	2,020	44	245.4	5.3	2.18
Total	30,704	141	15,710	565	7,112	168	27,494	232	81,020	1,106	388.2	5.3	1.37

Source : Medical Statistics Unit

Note : Excludes Mullaitivu RDHS Division

¹ Deaths per 100 cases

² Includes Kalmunai RDHS Division

³ Used provisional mid-year population for calculation

Table 25. Inpatients Treated for Mental Disorders ¹ by Regional Director of Health Services Division, 2011

RDHS Division	Dementia (F01,F03)	Mental and Behavioral Disorders		Schizophrenia, Schizotypal and Delusional Disorders (F20- F29)	Mood Disorders (F30-F39)	Neurotic, Stress-Related Somatoform Disorders (F40-F48)	Mental Retardation Related Disorders (F70- F79)	Behavioral and Emotional Disorders Usually in Childhood and Adolescence (F90 -F98)	Other and Unspecified Mental Disorders (F04-F09,F50-F69,F80-F89,F99)	Total
		Due to Alcohol (F10)	Due to Other Psychoactive Substance Use (F11- F19)							
Colombo	235	702	308	4,643	3,058	318	103	96	399	9,862
Gampaha	126	860	106	1,187	1,308	181	7	17	766	4,558
Kalutara	26	373	35	267	141	48	2	18	255	1,165
Kandy	55	826	41	580	1,697	309	47	15	327	3,897
Matale	3	171	33	198	464	30	11	7	75	992
Nuwara Eliya	3	223	15	270	341	44	15	8	193	1,112
Galle	49	355	15	1,247	896	20	14	12	280	2,888
Matara	22	401	33	373	652	97	4	6	187	1,775
Hambantota	19	60	30	252	27	25	5	1	429	848
Jaffna	45	234	4	1,268	423	423	11	13	287	2,708
Kilinochchi	-	-	2	47	80	2	14	-	1	146
Mannar	-	21	40	38	54	1	1	1	-	156
Vavuniya	13	36	6	280	179	69	9	2	11	605
Batticaloa	59	310	43	94	187	767	53	133	133	1,779
Ampara	-	23	67	100	34	99	2	6	42	373
Kalmunai	4	21	60	226	122	69	24	33	53	612
Trincomalee	8	54	23	88	162	70	10	27	130	572
Kurunegala	40	727	248	861	1,628	57	-	64	417	4,042
Puttalam	11	198	23	37	119	47	12	22	68	537
Anuradhapura	139	189	134	521	533	71	21	4	439	2,051
Polonnaruwa	4	51	10	82	25	28	18	20	403	641
Badulla	562	67	192	693	176	37	3	5	284	2,019
Moneragala	2	70	45	119	73	11	-	1	113	434
Ratnapura	34	274	52	368	132	29	6	23	85	1,003
Kegalle	12	346	21	156	229	70	5	46	49	934
Sri Lanka	1,471	6,592	1,586	13,995	12,740	2,922	357	580	5,426	45,709

Source: Medical Statistics Unit

¹ Excludes Mullaitivu RDHS Division

Table 26. Case Fatality Rate¹ for Selected Diseases, 2007 - 2011

Disease	2007			2008			2009			2010			2011		
	Cases	Deaths	Case Fatality Rate	Cases	Deaths	Case Fatality Rate	Cases	Deaths	Case Fatality Rate	Cases	Deaths	Case Fatality Rate	Cases	Deaths	Case Fatality Rate
Typhoid and para typhoid (A01)	3,595	3	0.1	2,909	2	0.1	4,381	7	0.2	3,599	2	0.1	3,208	2	0.1
Tetanus (A34, A35)	57	8	14.0	70	4	5.7	39	10	25.6	29	8	27.6	46	4	8.7
Shigellosis (A03)	6,195	4	0.1	3,381	2	0.1	3,396	2	0.1	3,338	3	0.1	3,238	1	0.0
Slow fetal growth, fetal malnutrition and disorders related to short gestation and low birth weight (P05-P07)	7,686	759	9.9	7,790	636	8.2	6,962	609	8.7	7,350	877	11.9	7,114	708	10.0
Measles (B05)	132	1	0.8	149	1	0.7	162	-	-	147	-	-	102	-	-
Whooping cough (A37)	-	-	-	-	-	-	-	-	-	-	-	-	65	-	-
Viral hepatitis (B15-B19)	6,611	10	0.2	3,066	2	0.1	9,257	8	0.1	2,989	8	0.3	2,600	13	0.5
Malaria (B50-B54)	1,032	1	0.1	634	2	0.3	1,060	1	0.1	595	-	-	155	-	-
Tetanus neonatorum (A33)	3	-	0.0	1	-	0.0	-	-	-	1	-	-	23	-	-
Diseases of the liver (K70-K76)	17,447	2,054	11.8	17,419	2,116	12.1	17,245	2,074	12.0	17,582	2,015	11.5	15,913	1,632	10.3
Septicaemia (A40, A41)	4,067	1,693	41.6	4,799	1,818	37.9	5,540	2,090	37.7	5,817	2,364	40.6	6,049	2,360	39.0
Snake bites (T63.0)	39,321	91	0.2	38,381	58	0.2	39,813	86	0.2	42,234	88	0.2	42,308	135	0.3
Hypertensive diseases (I10-I15)	93,985	583	0.6	94,296	565	0.6	97,857	541	0.6	98,485	705	0.7	98,729	612	0.6
Ischaemic heart disease (I20-I25)	85,455	4,536	5.3	85,511	4,466	5.2	92,107	4,856	5.3	98,755	5,122	5.2	100,332	5,289	5.3
Pneumonia (J12, J18)	18,708	1,380	7.4	22,515	2,121	9.4	22,713	1,850	8.1	23,875	2,099	8.8	23,421	2,064	8.8
Asthma (J45, J46)	178,777	721	0.4	196,151	830	0.4	199,139	676	0.3	195,825	772	0.4	187,085	610	0.3
Bacterial meningitis (G00, G03)	3,409	121	3.5	3,281	125	3.8	4,771	158	3.3	4,569	122	2.7	3,479	114	3.3

Source: Medical Statistics Unit

¹ Deaths per 100 cases

Note : Excludes Mullaitivu RDHS Division

Table 27. Inpatients Treated and Hospital Deaths by Type of Institution and RDHS Division, 2011

District	Teaching Hospitals		Provincial General/District General Hospitals		Base Hospitals Type A		Base Hospitals Type B		Divisional Hospitals Type A		Divisional Hospitals Type B		Divisional Hospitals Type C		Other Hospitals with Indoor Patients ¹		Primary Medical Care Units and Maternity Homes		Total		Hospital Deaths per 100 Cases	Inpatients per 1,000 Population ²
	Cases	Deaths	Cases	Deaths	Cases	Deaths	Cases	Deaths	Cases	Deaths	Cases	Deaths	Cases	Deaths	Cases	Deaths	Cases	Deaths	Cases	Deaths		
Colombo	557,142	7,989	-	898	118,576	898	12,244	47	6,839	16	34,811	126	4,681	7	97,917	2,011	-	832,210	11,094	322.1	1.3	
Gampaha	123,896	1,331	171,055	418	62,622	418	21,362	41	37,352	103	5,755	10	23,432	31	23,059	150	-	468,537	3,253	213.8	0.7	
Kalutara	-	-	75,183	200	100,821	841	-	-	18,107	25	40,720	45	11,665	17	-	-	-	246,496	1,128	215.5	0.5	
Kandy	235,168	3,587	37,557	328	-	-	41,805	255	-	-	69,891	214	61,266	61	3,627	3	-	449,314	4,448	310.5	1.0	
Matale	-	-	64,113	444	47,925	322	-	-	-	-	21,339	58	19,534	39	-	-	-	152,911	863	303.4	0.6	
Nuwara Eliya	-	-	40,357	394	13,758	147	12,447	38	12,030	31	27,847	66	24,893	45	-	-	-	131,342	721	171.0	0.5	
Galle	158,810	2,105	-	429	70,193	429	5,070	23	2,937	4	42,580	76	25,278	30	2,138	-	-	307,006	2,667	280.1	0.9	
Mataru	-	-	104,023	505	-	-	29,710	105	11,005	8	39,913	79	13,780	11	-	-	-	198,431	708	234.3	0.4	
Hambantota	-	-	53,807	296	30,182	220	20,925	61	-	-	42,003	41	20,387	1	-	-	-	167,304	619	290.5	0.4	
Jaffna	114,341	1,450	-	67	23,443	67	12,078	11	-	-	15,699	32	4,457	5	134	-	-	170,152	1,565	275.8	0.9	
Kilinochchi	-	-	18,529	64	-	-	1,185	-	-	-	-	-	3,896	7	-	-	-	23,610	71	147.6	0.3	
Mannar	-	-	10,547	102	-	-	-	-	-	-	4,054	1	2,690	3	-	-	-	17,291	106	164.7	0.6	
Vavuniya	-	-	50,105	320	-	-	7,322	35	-	-	-	-	1,535	1	-	-	-	58,962	356	333.1	0.6	
Batticaloa	71,967	550	-	-	-	-	33,043	72	-	-	20,000	12	11,218	2	-	-	2,251	138,479	636	251.8	0.5	
Ampara ³	-	-	46,064	336	46,782	300	64,589	199	-	-	19,473	12	20,658	8	-	-	1,867	199,433	855	304.9	0.4	
Trincomalee	-	-	40,226	285	18,173	65	26,277	27	-	-	-	-	25,476	19	-	-	-	110,152	396	289.9	0.4	
Kurunegala	163,808	2,312	-	495	58,709	495	70,487	316	58,167	155	70,052	158	41,164	37	-	-	-	462,387	3,473	293.2	0.8	
Puttalam	-	-	53,065	593	40,888	323	28,233	138	17,266	45	11,241	20	13,731	19	-	-	-	164,424	1,138	208.4	0.7	
Anuradhapura	112,425	1,729	-	-	-	-	29,271	95	31,586	584	39,610	61	70,383	65	-	-	-	283,275	2,534	337.2	0.9	
Polonnaruwa	-	-	71,021	607	-	-	19,203	94	8,936	30	21,836	6	10,420	17	-	-	-	131,416	754	316.7	0.6	
Badulla	-	-	88,612	872	64,037	606	13,887	62	16,477	55	19,034	47	42,269	49	-	-	-	244,316	1,691	272.4	0.7	
Monaragala	-	-	46,714	402	-	-	25,497	87	8,664	19	27,131	31	27,142	16	-	-	-	135,148	555	303.7	0.4	
Ratnapura	-	-	109,419	1,136	54,880	128	51,588	323	19,586	56	32,582	37	36,246	70	-	-	-	294,301	1,750	258.4	0.6	
Kegalle	65,222	583	-	-	-	-	68,411	467	35,682	72	3,067	9	9,142	3	13	-	-	181,537	1,134	220.6	0.6	
Total	1,602,779	21,636	1,080,401	8,053	750,999	5,259	594,634	2,496	284,634	1,203	608,638	1,141	515,343	563	126,888	2,164	4,118	5,568,434	42,515	268.7	0.8	

Source : Medical Statistics Unit

Note : Excludes Multi-tivu RDHS Division

¹ Include Mental, Chest, Leprosy, Police, Fever, Cancer, Dental and Rehabilitation hospitals

² Used provisional mid-year population for calculation

³ Includes Kalmunai RDHS Division

ANNUAL HEALTH STATISTICS - 2011

Table 28a . Outpatient Attendance by District and Type of Institution, 2011

District	Teaching Hospitals	Provincial General Hospitals	District General Hospitals	Base Hospitals Type A	Base Hospitals Type B	Divisional Hospitals Type A	Divisional Hospitals Type B	Divisional Hospitals Type C	Primary Medical Care Unit & Maternity Homes	Other Hospitals with Indoor Facility ¹	Other Hospitals without Indoor Facility	Primary Medical Care Units	Total	Attendance per 1,000 Population ²
Colombo	2,519,869	-	-	569,692	205,219	124,758	743,222	156,632	-	814,187	-	420,359	5,553,938	2,149
Gampaha	630,229	-	606,756	290,811	239,513	568,905	91,382	458,159	-	239,662	-	680,419	3,805,836	1,737
Kalutara	-	-	374,719	619,134	-	218,158	573,933	301,103	-	-	22,627	206,237	2,315,911	2,024
Kandy	861,954	-	274,587	-	318,383	-	956,793	996,487	-	178,255	99,333	411,986	4,097,778	2,832
Matale	-	-	336,096	193,626	-	-	270,541	379,241	-	-	-	292,473	1,471,977	2,921
Nuwara Eliya	-	-	206,193	90,906	123,230	92,729	299,992	380,518	-	-	-	271,276	1,464,844	1,907
Galle	518,829	-	-	348,708	61,332	63,620	553,399	467,845	-	66,480	-	482,595	2,562,808	2,338
Matara	-	-	423,303	-	208,739	99,427	423,610	116,850	-	-	5,168	667,836	1,944,933	2,296
Hambantota	-	-	262,499	141,182	217,888	-	532,292	438,434	-	-	-	190,771	1,783,066	3,096
Jaffna	282,946	-	-	190,392	164,957	-	257,935	372,136	-	-	21,639	212,313	1,502,318	2,435
Kilinochchi	-	-	159,763	-	25,867	-	-	109,222	-	-	-	3,043	297,895	1,862
Mannar	-	-	247,052	-	66,292	-	-	147,887	-	-	14,616	27,102	502,949	4,790
Vavuniya	-	-	141,035	-	-	-	85,147	111,318	-	-	-	2,260	339,760	1,920
Batticaloa	221,796	-	-	-	343,069	-	289,261	375,025	-	-	5,114	220,572	1,454,837	2,645
Ampara	-	-	245,987	342,824	556,026	-	371,670	430,270	38,231	-	-	350,578	2,335,586	3,571
Trincomalee	-	-	119,186	150,599	236,856	-	-	290,356	-	-	-	324,201	1,121,198	2,951
Kurunegala	476,494	-	-	205,882	420,612	567,550	906,229	774,202	-	-	-	670,120	4,021,089	2,550
Puttalam	-	-	239,701	173,345	148,498	200,567	220,802	361,963	-	-	2,305	314,856	1,662,037	2,107
Anuradhapura	183,367	-	-	-	311,955	443,869	522,793	814,987	-	28,722	-	291,146	2,596,839	3,091
Polonnaruwa	-	-	276,551	-	246,568	106,983	285,641	174,669	-	-	-	201,565	1,291,977	3,113
Badulla	-	272,653	-	360,682	138,106	199,850	328,276	967,385	-	-	-	262,626	2,529,578	2,820
Monaragala	-	-	110,711	-	370,633	107,621	376,883	407,096	-	-	-	142,183	1,515,127	3,405
Ratnapura	-	293,181	-	161,445	509,966	280,572	403,280	633,204	-	-	-	172,041	2,453,689	2,154
Kegalle	359,698	-	-	-	441,399	473,369	63,761	316,025	-	18,660	14,747	368,565	2,056,224	2,498
Total	6,055,182	565,834	4,024,139	3,839,228	5,355,108	3,547,978	8,556,842	9,981,014	38,231	1,345,966	185,549	7,187,123	50,682,194	2,429

Source: Medical statistics Unit

¹ Includes Mental, Chest, Leprosy, Police, Prison, Fever, Cancer, Dental and Rehabilitation Hospitals

² Used provisional mid-year population for calculation

Table 28b. Trends in Inpatient and Outpatient Attendance and Rates Per 1,000 Population, 1985 - 2011

Year	Inpatients Treated		Outpatient Attendance ¹	
	Number '000	Rate	Number '000	Rate
1985	2,494	157.4	29,570	1,867.1
1990 ²	2,533	174.6	28,401	2,000.5
1995 ³	2,953	179.3	32,084	1,947.7
1996 ⁴	3,339	184.5	35,348	1,953.2
1997 ⁵	3,454	191.7	38,078	2,114.0
1998	3,791	201.9	41,071	2,187.7
1999	3,825	200.9	41,323	2,170.1
2000	4,015	207.4	43,329	2,238.2
2001	4,092	218.6	43,350	2,315.6
2002	4,032	212.7	45,681	2,409.9
2003	3,993	207.4	43,765	2,273.3
2004	4,242	218.0	43,392	2,229.6
2005	4,345	220.9	42,482	2,160.0
2006	4,463	224.4	41,429	2,083.3
2007	4,609	230.3	43,073	2,152.6
2008	4,898	242.3	45,381	2,219.2
2009 ^{4, a}	5,474	267.7	48,782	2,385.4
2010 ^{6, a}	5,591	270.7	49,871	2,414.7
2011 ^{6, a}	5,611	268.9	50,682	2,428.6

Rate per 1,000 population

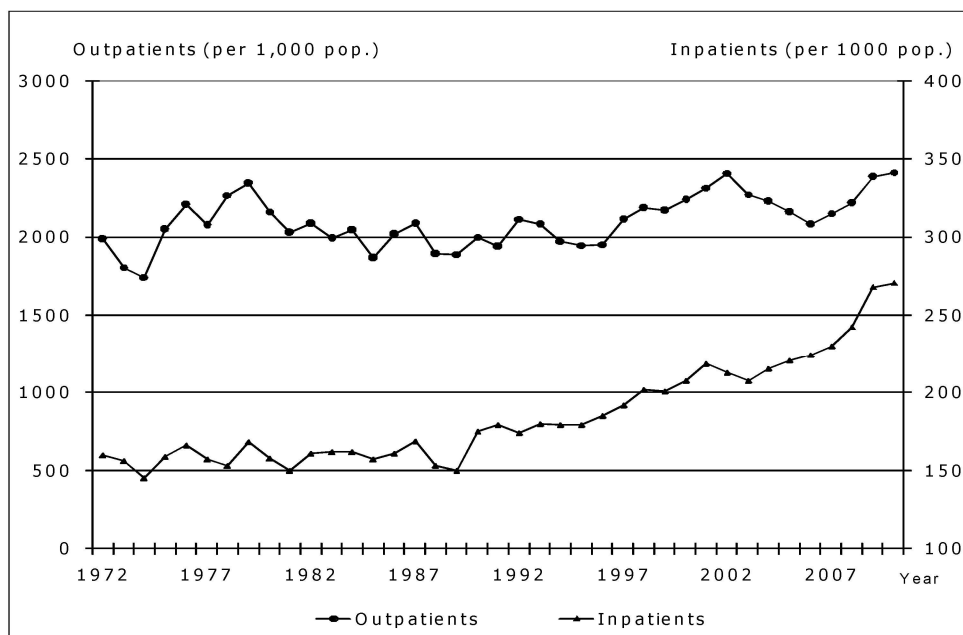
Source : Medical Statistics Unit

^a used provisional mid-year population for calculating the rate

Excludes:

- ¹ Clinic Attendance
- ² Northern and Eastern Provinces
- ³ Jaffna, Kilinochchi, Mullaitivu and Ampara Districts
- ⁴ Kilinochchi and Mullaitivu Districts
- ⁵ Ampara District
- ⁶ Mullaitivu District

Figure 4. Inpatient and Outpatient Attendance in Government Medical Institutions, 1972 - 2011



ANNUAL HEALTH STATISTICS - 2011

Table 29. Outpatient Attendance by RDHS Division, 2011 ¹

RDHS Division	Quarter				Total Visits
	First	Second	Third	Fourth	
Colombo	1,431,344	1,349,596	1,410,645	1,362,353	5,553,938
Gampaha	963,976	957,776	944,879	939,205	3,805,836
Kalutara	596,895	576,910	562,427	579,679	2,315,911
Kandy	999,478	1,032,578	1,048,558	1,017,164	4,097,778
Matale	371,175	363,227	353,152	384,423	1,471,977
Nuwara Eliya	357,709	364,750	366,164	376,221	1,464,844
Galle	642,348	639,234	636,041	645,185	2,562,808
Matara	459,908	437,868	503,923	543,234	1,944,933
Hambantota	453,680	442,076	427,092	460,218	1,783,066
Jaffna	380,633	356,867	361,950	402,868	1,502,318
Kilinochchi	77,673	69,956	71,967	78,299	297,895
Mannar	94,017	78,735	77,209	89,799	339,760
Vavuniya	129,282	120,004	117,919	135,744	502,949
Batticaloa	365,100	356,138	333,610	399,989	1,454,837
Ampara	249,190	243,265	229,943	220,292	942,690
Trincomalee	292,151	274,357	261,445	293,245	1,121,198
Kalmunai	353,868	344,170	320,148	374,710	1,392,896
Kurunegala	951,321	1,023,171	979,140	1,067,457	4,021,089
Puttalam	422,438	400,099	414,139	425,361	1,662,037
Anuradhapura	636,298	632,926	633,157	694,458	2,596,839
Polonnaruwa	340,399	311,214	303,944	336,420	1,291,977
Badulla	608,918	657,715	623,250	639,695	2,529,578
Monaragala	395,178	358,049	359,882	402,018	1,515,127
Ratnapura	604,808	596,640	570,192	682,049	2,453,689
Kegalle	521,904	480,559	543,781	509,980	2,056,224
Total	12,699,691	12,467,880	12,454,557	13,060,066	50,682,194

¹ Excludes Mullaitivu RDHS Division

Source : Medical Statistics Unit

Table 30. Outpatient Department (OPD) Visits by Type of Hospital, 2011

Hospital Type	Quarter				Total Visits
	First	Second	Third	Fourth	
Teaching Hospitals	1,485,208	1,499,494	1,521,309	1,549,171	6,055,182
Provincial General Hospitals	122,958	144,498	148,213	150,165	565,834
District General Hospitals	972,659	931,251	1,029,864	1,090,365	4,024,139
Base Hospitals Type A	973,646	948,667	934,427	982,488	3,839,228
Base Hospitals Type B	1,336,428	1,319,857	1,279,340	1,419,483	5,355,108
Divisional Hospitals Type A	901,037	855,568	880,520	910,853	3,547,978
Divisional Hospitals Type B	2,154,193	2,113,378	2,083,325	2,205,946	8,556,842
Divisional Hospitals Type C	2,514,989	2,490,475	2,417,481	2,558,069	9,981,014
Primary Medical Care Units & Maternity Homes	9,992	9,151	9,439	9,649	38,231
Other Hospitals with Indoor Facility	347,396	343,227	342,873	312,470	1,345,966
Other Hospitals without Indoor Facility	43,632	44,602	50,016	47,299	185,549
Primary Medical Care Units	1,837,553	1,767,712	1,757,750	1,824,108	7,187,123
Total Visits	12,699,691	12,467,880	12,454,557	13,060,066	50,682,194

Source : Medical Statistics Unit

Table 31. Clinic Visits by Quarter and Regional Director of Health Services Division, 2011¹

RDHS Division	First Quarter		Second Quarter		Third Quarter		Fourth Quarter		Total	
	First Visits	Total Visits	First Visits	Total Visits	First Visits	Total Visits	First Visits	Total Visits	First Visits	Total Visits
Colombo	212,879	909,511	180,300	846,502	206,022	937,732	169,468	767,313	768,669	3,461,058
Gampaha	128,199	462,319	154,165	486,514	158,227	528,486	139,603	505,324	580,194	1,982,643
Kalutara	49,781	178,619	56,641	206,338	68,049	232,186	66,312	228,800	240,783	845,943
Kandy	122,935	525,955	118,816	512,717	127,433	515,690	119,539	531,714	488,723	2,086,076
Matale	32,630	139,753	31,636	138,497	32,658	147,486	28,926	143,050	125,850	568,786
Nuwara Eliya	23,870	97,235	28,831	107,134	26,858	105,719	25,302	107,916	104,861	418,004
Galle	82,097	232,514	74,762	209,099	83,980	244,117	86,549	226,147	327,388	911,877
Matara	53,410	159,928	53,273	162,262	29,528	83,489	33,641	89,061	169,852	494,740
Hambantota	37,996	117,947	28,437	112,718	28,251	129,628	43,093	122,976	137,777	483,269
Jaffna	36,656	206,357	41,772	214,401	100,014	283,908	41,426	245,351	219,868	950,017
Kilinochchi	1,261	3,736	8,872	21,439	8,426	21,440	8,814	21,351	27,373	67,966
Mannar	8,687	33,412	8,443	31,197	9,746	31,456	7,846	32,309	34,722	128,374
Vavuniya	20,072	55,308	18,315	60,187	21,732	57,714	18,252	57,570	78,371	230,779
Batticaloa	26,588	82,884	23,790	81,688	25,499	89,405	30,854	90,331	106,731	344,308
Ampara	32,867	72,555	25,754	65,290	29,491	76,641	30,340	90,968	118,452	305,454
Trincomalee	13,562	62,694	15,864	69,435	16,898	69,634	20,280	76,558	66,604	278,321
Kalmunai	23,794	75,781	24,337	84,741	18,863	78,008	21,330	86,798	88,324	325,328
Kurunegala	86,442	379,180	86,477	389,468	96,855	425,445	99,839	419,560	369,613	1,613,653
Puttalam	42,897	155,248	44,897	158,565	51,299	163,331	59,238	207,806	198,331	684,950
Anuradhapura	41,591	194,041	41,591	195,874	36,971	187,059	33,607	183,158	153,760	760,132
Polonnaruwa	29,314	88,989	28,564	91,187	26,896	91,580	26,049	92,078	110,823	363,834
Badulla	53,019	224,047	54,184	230,253	68,490	258,814	61,451	243,025	237,144	956,139
Monaragala	37,752	88,552	35,530	93,156	24,270	63,496	39,561	97,249	137,113	342,453
Ratnapura	56,390	219,385	68,346	222,666	70,084	236,222	75,454	230,574	270,274	908,847
Kegalle	46,126	181,264	42,551	171,613	47,032	185,578	43,199	178,145	178,908	716,600
Sri Lanka	1,300,815	4,947,214	1,296,148	4,962,941	1,413,572	5,244,264	1,329,973	5,075,132	5,340,508	20,229,551

¹ Excludes Mullaitivu RDHS Division

Source : Medical Statistics Unit

Table 32. Clinic Visits by Quarter and Type of Hospital, 2011 ¹

Type of Hospital	First Quarter		Second Quarter		Third Quarter		Fourth Quarter		Total	
	First Visits	Total Visits	First Visits	Total Visits	First Visits	Total Visits	First Visits	Total Visits	First Visits	Total Visits
Teaching Hospitals	349,716	1,619,973	317,772	1,545,766	367,160	1,723,691	321,510	1,544,523	1,356,158	6,433,953
Provincial General Hospitals	34,923	160,210	34,616	164,105	43,151	172,519	33,445	163,860	146,135	660,694
District General Hospitals	222,820	645,266	237,119	681,712	195,701	569,949	211,570	654,022	867,210	2,550,949
Base Hospitals Type A	149,974	420,366	161,605	460,227	181,653	519,089	165,520	514,784	658,752	1,914,466
Base Hospitals Type B	107,956	402,817	104,854	389,892	123,554	437,440	155,293	471,712	491,657	1,701,861
Divisional Hospitals Type A	52,559	232,867	50,112	234,991	51,549	234,522	56,362	247,015	210,582	949,395
Divisional Hospitals Type B	145,320	483,086	129,078	489,527	196,716	553,379	143,423	484,429	614,537	2,010,421
Divisional Hospitals Type C	118,161	500,162	119,826	485,902	118,379	516,429	107,033	490,385	463,399	1,992,878
Primary Medical Care Units & Maternity Homes	358	849	1,814	2,597	239	1,531	151	1,833	2,562	6,810
Other Hospitals & Clinics ²	35,216	156,422	44,448	164,444	46,899	177,542	40,897	169,665	167,460	668,073
Primary Medical Care Units	83,812	325,196	94,904	343,778	88,571	338,173	94,769	332,904	362,056	1,340,051
Grand Total	1,300,815	4,947,214	1,296,148	4,962,941	1,413,572	5,244,264	1,329,973	5,075,132	5,340,508	20,229,551

¹ Excludes Mullaitivu District

² Includes Mental, Chest, Leprosy, Police, Prison, Fever, Cancer, Dental and Rehabilitation hospitals

Source : Medical Statistics Unit

ANNUAL HEALTH STATISTICS - 2011

Table 33. Utilization of Medical Institutions by RDHS Division, 2011 ¹

RDHS Division	Teaching Hospitals			Provincial General Hospitals			District General Hospitals			Base Hospitals Type A			Base Hospitals Type B		
	Duration of Stay	Bed Turn Over Rate	Bed Occupancy rate	Duration of Stay	Bed Turnover Rate	Bed Occupancy Rate	Duration of Stay	Bed Turnover Rate	Bed Occupancy Rate	Duration of Stay	Bed Turnover Rate	Bed Occupancy Rate	Duration of Stay	Bed Turnover Rate	Bed Occupancy Rate
Colombo	3.60	75.38	75.73							1.65	152.59	72.13	4.40	45.18	56.03
Gampaha	3.03	91.01	79.32				1.90	122.48	68.03	1.97	108.95	63.05	1.29	90.88	36.24
Kalutara							2.49	106.94	84.94	1.98	122.45	70.38			
Kandy	3.78	75.22	83.52				2.74	86.06	71.40				2.22	103.41	69.59
Matale							2.62	91.75	66.17	1.85	202.49	106.63			
Nuwara Eliya							3.12	96.69	89.24	2.33	143.39	98.72	1.90	97.29	51.28
Galle	3.43	84.79	86.73							2.34	110.29	71.39	2.09	51.71	30.22
Matara							2.96	102.02	83.40				2.36	81.99	53.84
Hambantota							2.43	146.56	98.39	2.23	142.54	87.79	1.44	76.72	36.81
Jaffna	3.02	94.30	78.52							3.02	64.51	53.63	2.19	65.95	39.87
Kilinochchi							2.53	130.58	91.26				3.64	36.28	38.02
Vavuniya							2.50	97.65	68.10				2.02	41.98	23.45
Mannar							2.37	56.88	37.31						
Batticaloa	2.77	79.89	66.77										2.10	97.62	56.70
Ampara							2.61	91.07	65.64				2.06	106.31	62.90
Kalmunai										2.85	68.54	53.94	2.35	85.37	56.42
Trincomalee							2.43	100.17	67.04	2.00	85.40	47.20	1.58	115.87	50.70
Kurunegala	2.91	100.62	82.44							2.34	123.98	80.15	2.32	105.21	68.15
Puttalam							2.18	114.85	69.51	1.92	125.67	67.95	2.64	87.57	68.31
Anuradhapura	3.70	76.52	78.96										2.13	88.36	52.17
Polonnaruwa							2.28	123.71	77.96				1.52	97.40	40.84
Badulla				4.21	70.18	81.98				2.81	116.96	90.81	2.01	122.96	70.11
Monaragala							2.43	126.65	88.72				1.95	86.40	46.68
Ratnapura				2.76	107.92	84.94				2.41	149.43	99.73	2.30	123.26	79.06
Kegalle	2.78	99.50	76.40										2.55	96.07	70.12
Average	3.23	86.36	78.71	3.49	89.05	83.46	2.51	106.27	75.14	2.26	122.66	75.96	2.23	86.53	52.61

¹ Excludes Mullaitivu RDHS Division

Continued...

Source : Medical Statistics Unit

Table 33. Utilization of Medical Institutions by RDHS Division, 2011 ¹

RDHS Division	Divisional Hospitals Type A			Divisional Hospitals Type B			Divisional Hospitals Type C			Primary Medical Care Units & Meternity Homes			Other Hospitals		
	Duration of Stay	Bed Turnover Rate	Bed Occupancy Rate	Duration of Stay	Bed Turnover Rate	Bed Occupancy Rate	Duration of Stay	Bed Turnover Rate	Bed Occupancy Rate	Duration of Stay	Bed Turnover Rate	Bed Occupancy Rate	Duration of Stay	Bed Turnover Rate	Bed Occupancy Rate
Colombo	1.62	64.16	28.83	1.28	86.44	32.14	1.30	75.38	27.08				8.04	30.93	72.35
Gampaha	2.74	60.89	46.27	1.53	93.45	39.34	1.73	131.56	63.39				9.79	19.67	58.25
Kalutara	1.62	46.65	24.33	1.26	82.22	29.78	1.36	70.71	26.53						
Kandy				1.83	75.52	38.72	1.98	76.77	42.24				7.96	18.94	45.33
Matale				2.07	88.80	50.62	2.18	67.96	40.89						
Nuwara Eliya	2.08	42.20	24.98	2.26	60.73	39.35	1.58	84.50	37.38						
Galle	2.06	28.80	16.47	1.82	77.36	39.33	1.31	107.65	38.95				11.87	22.08	75.89
Matara	1.60	106.56	48.44	2.74	95.44	73.81	2.10	64.01	37.63						
Hambantota				1.33	90.36	34.35	1.25	92.28	32.48						
Jaffna				3.37	54.41	50.59	2.29	22.63	14.31				11.94	5.80	22.90
Kilinochchi							4.56	57.18	72.12						
Vavuniya							1.13	39.67	12.49						
Mannar				2.34	32.32	20.86	2.93	69.10	56.08						
Batticaloa				2.52	79.37	55.98	2.04	58.73	35.35	1.00	217.75	59.70			
Ampara							1.26	67.06	23.99						
Kalmunai				2.62	41.68	30.18	1.56	84.88	36.42	2.59	149.56	106.51			
Trincomalee							1.73	83.20	40.04						
Kurunegala	1.44	75.64	30.54	1.63	71.31	33.16	1.59	87.79	38.68						
Puttalam	1.30	79.22	28.46	1.69	38.69	23.78	1.16	70.97	22.94						
Anuradhapura	1.86	86.22	44.94	1.59	89.71	41.03	1.87	87.31	45.48						
Polonnaruwa	1.70	69.45	32.53	1.42	87.21	34.16	2.75	87.17	66.35						
Badulla	2.03	85.92	47.99	2.09	55.29	33.12	1.83	75.67	38.34						
Monaragala	1.95	90.81	49.02	1.56	89.86	38.61	1.38	143.47	60.32						
Ratnapura	2.17	62.12	37.44	1.34	75.16	28.07	1.56	50.52	22.09						
Kegalle	1.44	79.62	32.26	1.83	49.08	25.01	1.56	65.39	27.98				62.58	0.10	99.45
Average	1.83	69.88	35.18	1.91	72.11	37.71	1.84	76.86	38.38	1.79	183.66	83.11	18.70	16.25	62.36

¹ Excludes Mullaitivu RDHS Division

Source : Medical Statistics Unit

ANNUAL HEALTH STATISTICS - 2011

Table 34. Average Duration of Stay (Days) in Selected Types of Hospitals per Quarter, 2004 - 2011

Type of Hospital	2004	2005	2006	2007	2008	2009	2010	2011
National Hospital, Colombo	4.8	4.4	4.4	4.3	4.3	4.2	4.0	4.3
Teaching Hospitals			3.6	3.6	3.5	3.4	3.3	3.2
Provincial Hospitals ^{1,2}	3.9	4.2	3.1	3.3	3.2	3.1	2.6	
Base Hospitals ³	3.0	3.0	2.4	2.3	2.2	2.1	2.1	
District Hospitals	2.3	2.2	1.9	2.0	2.1	2.1	1.8	
Peripheral Units	2.2	2.0	1.9	2.0	1.9	1.9	1.6	
Rural Hospitals ⁴	2.1	1.9	1.8	1.9	1.9	2.2	1.6	
Provincial General Hospitals								3.5
District General Hospitals								2.5
Base Hospitals Type A								2.3
Base Hospitals Type B								2.2
Divisional Hospitals Type A								1.8
Divisional Hospitals Type B								1.9
Divisional Hospitals Type C								1.8
Children's Hospital	3.0	3.1	2.9	3.3	3.2	3.0	2.8	3.0
Eye Hospital	8.0	7.3	3.8	3.3	3.8	4.4	3.6	4.3
Cancer Hospital	8.9	10.0	8.3	8.2	7.0	7.0	7.0	6.7
Mental Hospitals	54.6	62.8	30.2	60.0	65.9	60.2	27.7	33.6
Chest Hospitals	25.0	8.7	14.4	NA	12.5	10.5	14.7	14.3
Maternity Hospitals	4.5	5.5	5.7	3.6	3.3	3.4	3.6	3.1
Maternity Homes	2.4	2.2	3.1	2.6	1.4	1.6	1.6	1.8
Leprosy Hospitals	NA	NA	73.3	77.0	87.9	75.0	88.1	74.5
Rehabilitation Hospitals	NA	NA	24.5	30.0	26.1	26.9	26.5	33.0

NA - Not Available

Source : Medical Statistics Unit

¹ Includes Teaching Hospitals up to 2005

² Includes Provincial General Hospitals, District General Hospitals and District Hospitals

³ Includes District Base Hospitals

⁴ Includes Estate Hospitals

Table 35. Performance of Dental Surgeons by District, 2011

District	Extraction				D.A.A. Treated	Infection	Leukoplakia	Oral Carcinoma	Restoration				Scaling	Minor Surgery	Prevention Community	Total Visits
	Deciduous	Permanent Caries	Permanent Periodontal	Other					Temporary	Amalgam	Composite	Advanced Conservation				
Colombo	5,151	44,340	13,205	4,349	12,644	848	125	62	48,525	22,509	19,094	7,238	12,732	1,110	3,476	216,044
Gampaha	7,121	54,321	15,486	1,439	5,850	470	44	18	30,804	20,903	14,537	1,655	8,900	1,824	4,065	205,213
Kalutara	3,084	22,040	3,689	230	3,365	467	16	8	15,570	6,147	6,515	180	1,761	867	342	76,886
Kandy	2,322	22,375	7,418	2,393	4,734	236	2	2	12,491	7,721	5,162	905	4,007	1,207	3,597	84,815
Matale	3,966	16,926	4,524	159	3,123	131	2	4	7,536	5,676	1,901	478	1,866	522	2	52,856
Nuwara Eliya	1,419	14,204	3,195	363	2,459	1,094	25	3	7,095	5,267	5,255	917	2,331	273	95	44,215
Galle	3,368	43,959	7,497	1,607	3,029	210	1	3	17,063	8,397	6,270	592	3,282	554	552	115,701
Matara	2,616	32,538	6,764	3,362	3,996	371	64	57	18,720	12,063	5,621	1,109	7,191	964	1,593	98,007
Hambantota	2,256	20,126	6,228	572	2,646	804	19	1	11,189	6,783	3,884	332	2,445	914	312	59,869
Jaffna	4,349	32,393	8,411	2,021	12,998	464	31	46	9,237	4,437	3,470	2,385	3,623	357	248	86,869
Kilinochchi	2,553	15,615	2,256	3	12	3	24	-	4,967	6,267	5,444	107	1,797	-	-	39,055
Mullaitivu	236	3,020	1,257	3	434	57	-	-	474	143	116	28	335	-	266	7,968
Mannar	3,149	8,969	4,247	3,548	99	173	17	8	1,733	261	864	406	812	112	-	25,973
Vavuniya	1,166	8,303	1,344	32	272	131	7	4	2,781	533	2,922	1,145	1,043	173	1,274	41,115
Batticaloa	3,738	11,315	2,268	233	984	557	28	65	752	332	1,620	674	230	446	14	74,166
Ampara	6,912	26,390	5,198	515	1,350	311	8	4	4,496	4,181	2,702	1,081	2,294	469	516	73,337
Trincomalee	3,336	18,960	7,167	198	3,594	152	3	-	2,765	2,357	1,554	1,036	1,751	269	-	46,032
Kurunegala	2,942	22,407	8,952	609	2,913	647	9	8	10,689	9,237	3,765	718	4,730	3,225	3,341	188,805
Puttalam	2,546	19,608	2,888	168	1,532	261	-	2	3,722	3,749	3,287	891	1,482	131	1,140	51,771
Anuradhapura	1,178	10,028	1,442	1,652	467	260	3	5	2,358	1,143	365	560	710	667	-	27,309
Polonnaruwa	650	3,516	47	2,057	11	5	-	-	1,371	240	488	162	1,734	90	33	11,336
Badulla	3,999	19,565	5,640	2,132	9,026	294	25	13	18,542	9,407	5,952	969	5,214	1,251	444	83,469
Monaragala	2,675	14,121	3,038	87	5,171	95	53	2	7,178	2,780	5,034	1,631	3,681	779	176	61,494
Ratnapura	3,050	31,047	6,795	333	6,978	372	85	24	22,377	8,555	10,070	1,458	3,356	1,101	1,700	115,354
Kegalle	2,469	24,701	6,749	776	4,641	447	31	11	16,664	9,330	9,648	1,099	5,282	497	177	97,712
Total	76,245	541,781	135,699	28,833	92,322	8,852	622	350	279,093	158,412	125,532	27,756	82,583	17,800	23,358	1,985,368

Source : Medical Statistics Unit